




DOLCE LA HULPE BRUSSELS
THE DOLCE HOTEL COLLECTION



DOLCE LA HULPE BRUSSELS

Dolce La Hulpe Brussels is located in the heart of the gorgeous Sonian forest, only a few minutes from the city centre of Brussels and Brussels International Airport. With an incredible 4,500 m² (48,450 sq ft) of dedicated, state-of-the-art meeting space, the most cutting-edge technology imaginable, Dolce La Hulpe

Brussels is a full service destination perfect for either business or pleasure, especially with its luxury Cinq Mondes Spa, pool and fitness centre, fine dining, and a selection of 264 guest rooms and suites that reflect hospitality at its finest.



ACCOMMODATION

With an outstanding view of the forest, all 264 non-smoking guest rooms integrate the year-round natural beauty of the surroundings into the interiors.

Including 11 Junior suites and 1 Sequoia suite, the accommodations offer the ultimate in modern appointments, ranging from free wireless high speed Internet access, voice-mail enabled phones and cable flat screen television to the simple convenience of an oversized working desk. Designed with an eye for comfort and detail, the rooms are the perfect retreat after a busy day of work or recreation.



CONFERENCE FACILITIES

The Dolce La Hulpe Brussels meeting experience begins with a team of dedicated conference planners and audio-visual technicians at your service to customise your event. With 4,500 m² (48,450 sq ft) of IACC* certified superb meeting space, including 27 meetings rooms, 12 break-out rooms and 3 auditoria seating 36, 150 and 500 persons, the choices are versatile and diverse. Each meeting room reflects the most state-of-the-art technology, as well as subtle comforts like daylight, free unlimited Wi-Fi and ergonomic seating. For VIP meetings and trainings, the exclusive 'The Academy' will cater to your needs with its 36-seat auditorium, 3 breakout rooms, a private Nourishment Hub and terrace. Many team building activities are also proposed to ensure all participants lasting memories of a successful meeting.

* IACC: International Association of Conference Centres



CORPORATE EVENTS & BANQUETS

Receptions, gala dinners, product launches, exhibitions, vehicle launches, incentives... Dolce La Hulpe Brussels offers exceptional reception rooms whatever the size of your event. With its verdant surroundings, the dining rooms range from our stately ballroom of 750 m² for up to 625 guests, to more intimate dining rooms, special themed menus, gorgeous buffets and many cocktail options. The terraces and gardens provide limitless opportunities for outdoor events taking advantage of the beautiful surroundings...



DINING EXPERIENCE

The contemporary and elegant Brasserie 135 (rewarded with a Silver Delta award) offers a menu that respects the products and enhances their flavours.

The Brasserie 135 can be partially privatized for groups accommodating 56 people. The restaurant Argan offers large space for sumptuous buffets for breakfast, lunch and dinner. Our Executive Chef pays particular attention to the quality of the ingredients and the healthy aspect of his cuisine. During the mild and warm months delicious barbecues on the terraces inspire to look upon a sea of green that let one relax and enjoy quality food.



SPORTS & RECREATION

Making the most of the beautiful countryside is just one of the ways Dolce La Hulpe Brussels nourishes the minds and bodies of its guests, especially with two tennis courts, mountain bike trails, jogging paths, and an array of other individual and group activities available, such as fitness group classes, Yoga and Nordic Walking. For golf enthusiasts, the selection of 18-hole courses nearby provides hours of enjoyment on some of the finest fairways in Europe. To relieve the tensions of daily life, enjoy relaxing in the indoor pool before or after a sauna or steam bath. All residential guests have complimentary access to the Wellness centre.



THE SPA

Cinq Mondes Spa invites you to a unique relaxation experience. Discover a marvellous selection of treatments and well-being traditions marked by quality, authenticity and ceremony. Explore a whole new world of the senses in the woodland environment of the Sonian forest! Our luxurious 800m² Cinq Mondes Spa invites to experience a Sensorial Journey® inspired in the ancestral ritual massages practiced in Bali, India, Brazil, Japan and Polynesia. To make an appointment or for more information, please contact our Cinq Mondes Spa at +32 2 290 99 01 or per email: cinq.mondes@dolce.com.

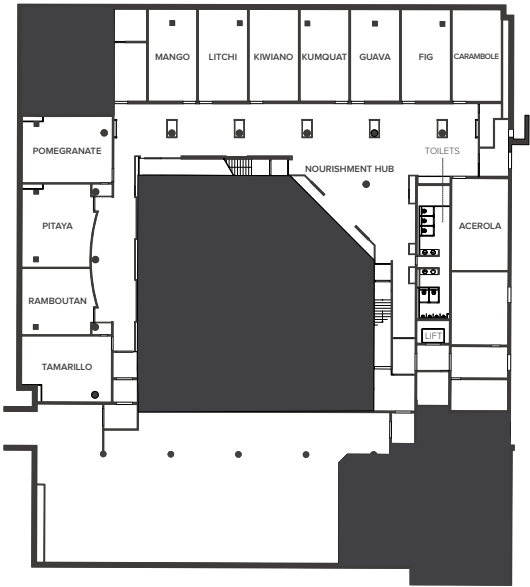


THE NEIGHBOURHOOD

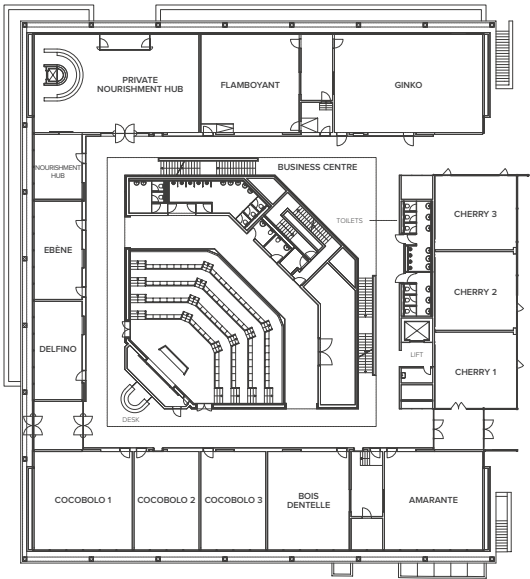
The charming village of La Hulpe is located next to the beautiful Sonian forest, offering a wide range of recreational possibilities. The proximity to Brussels lends itself a number of cultural visits. The 19th century La Hulpe Castle, classified as an “Exceptional Heritage Site in Wallonia” and the Folon Foundation make for interesting historic and cultural visits. The famous city of Waterloo is just 5 km (3 miles) away, offering a vast range of historical sights and museums about the confrontation between the Napoleonic troops against those of Wellington on June 18th, 1815. The Grand Place of Brussels, the Royal Galleries, the iconic Manneken Pis and the famous Atomium are perfect for group or individual activities.

FLOOR PLAN

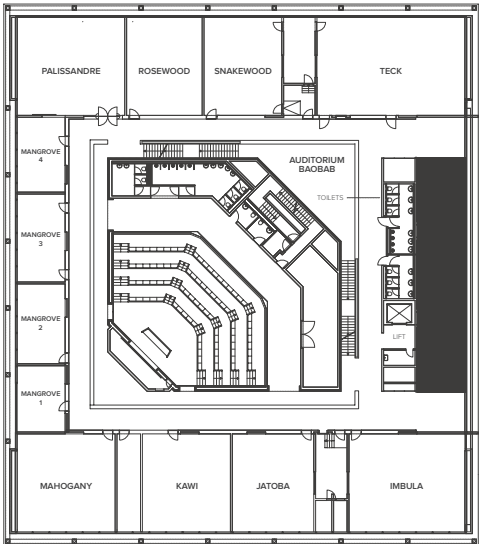
GROUND FLOOR



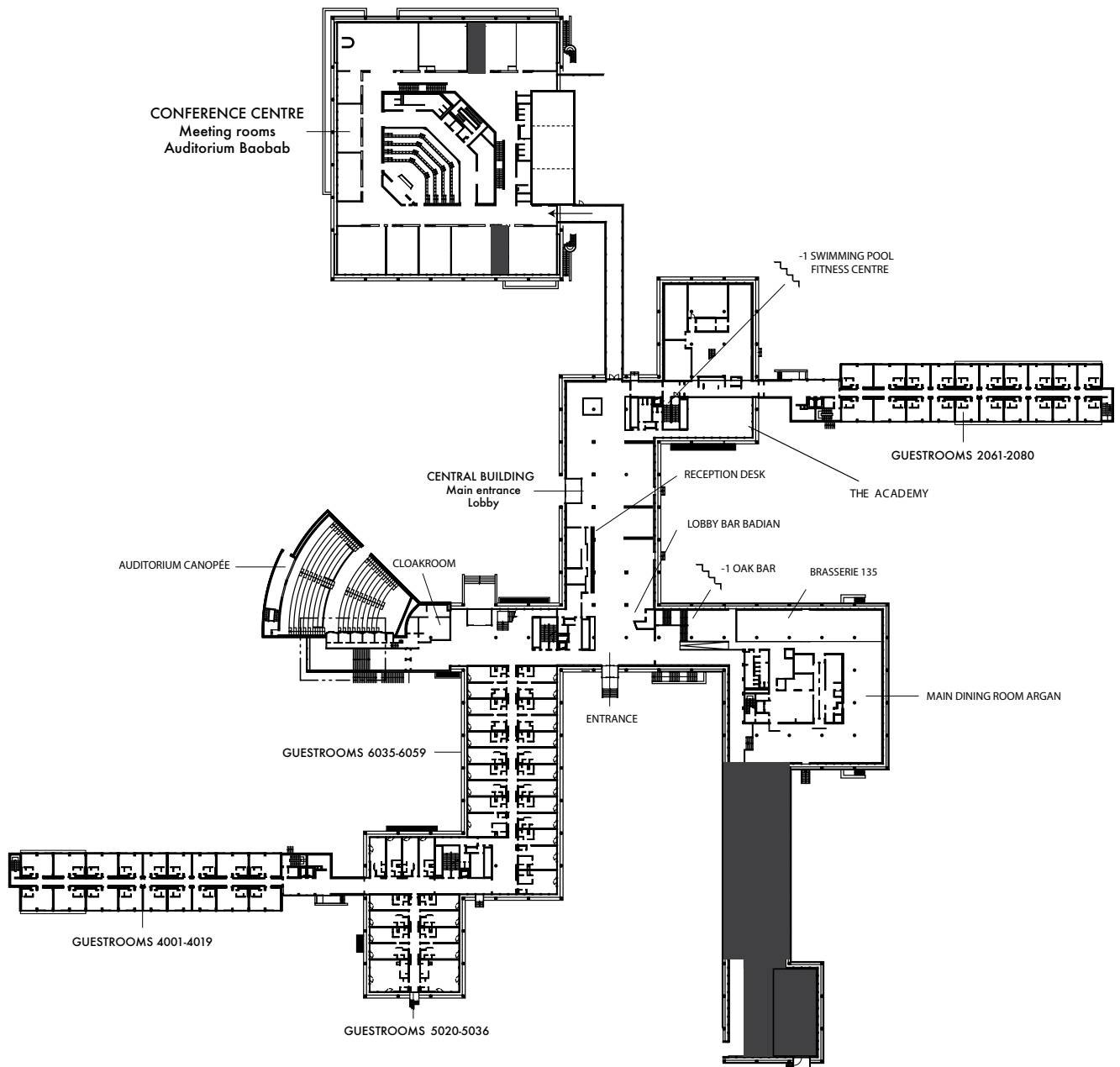
FIRST FLOOR



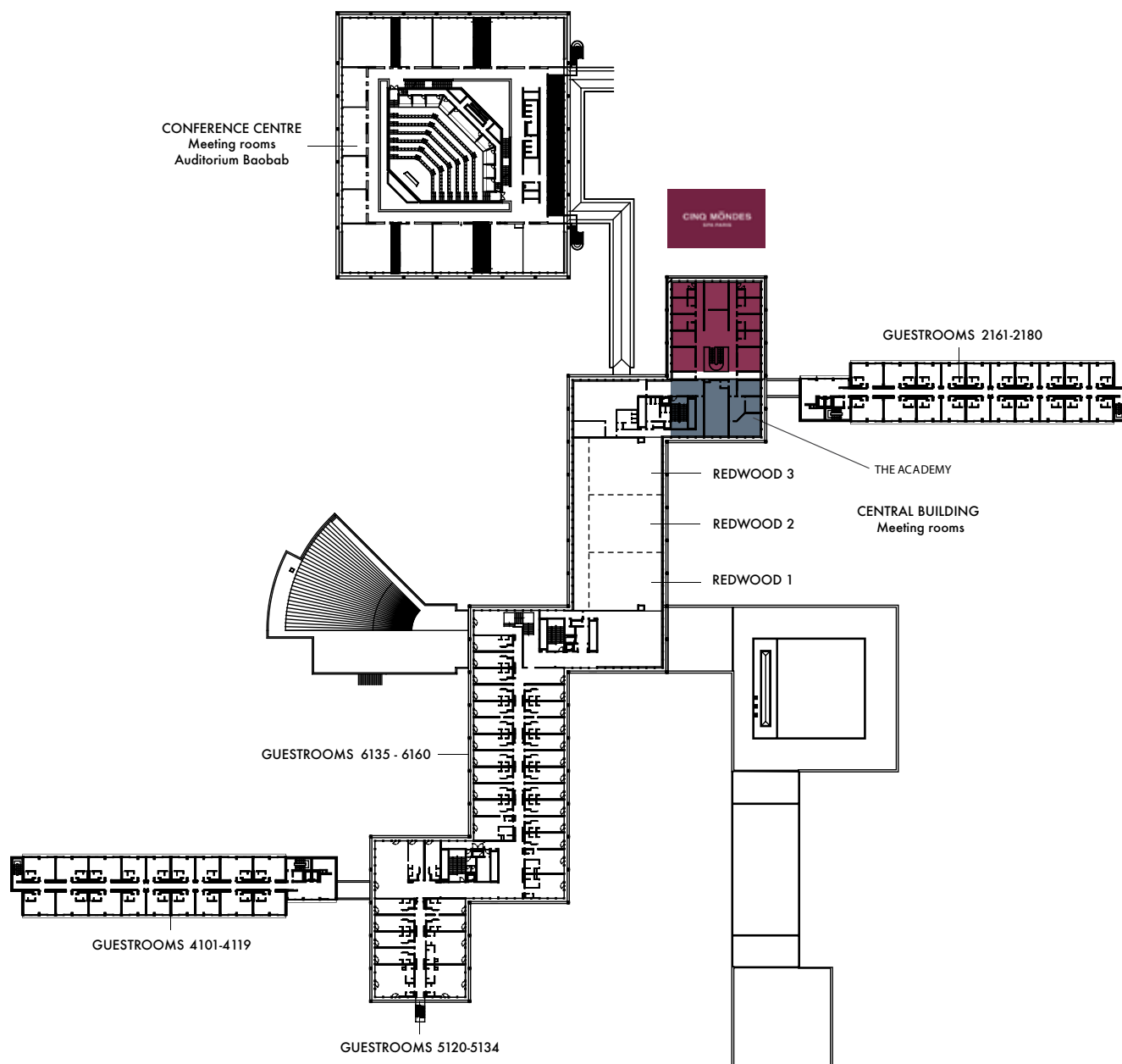
SECOND FLOOR



FLOOR PLAN GROUND FLOOR



FLOOR PLAN FIRST FLOOR

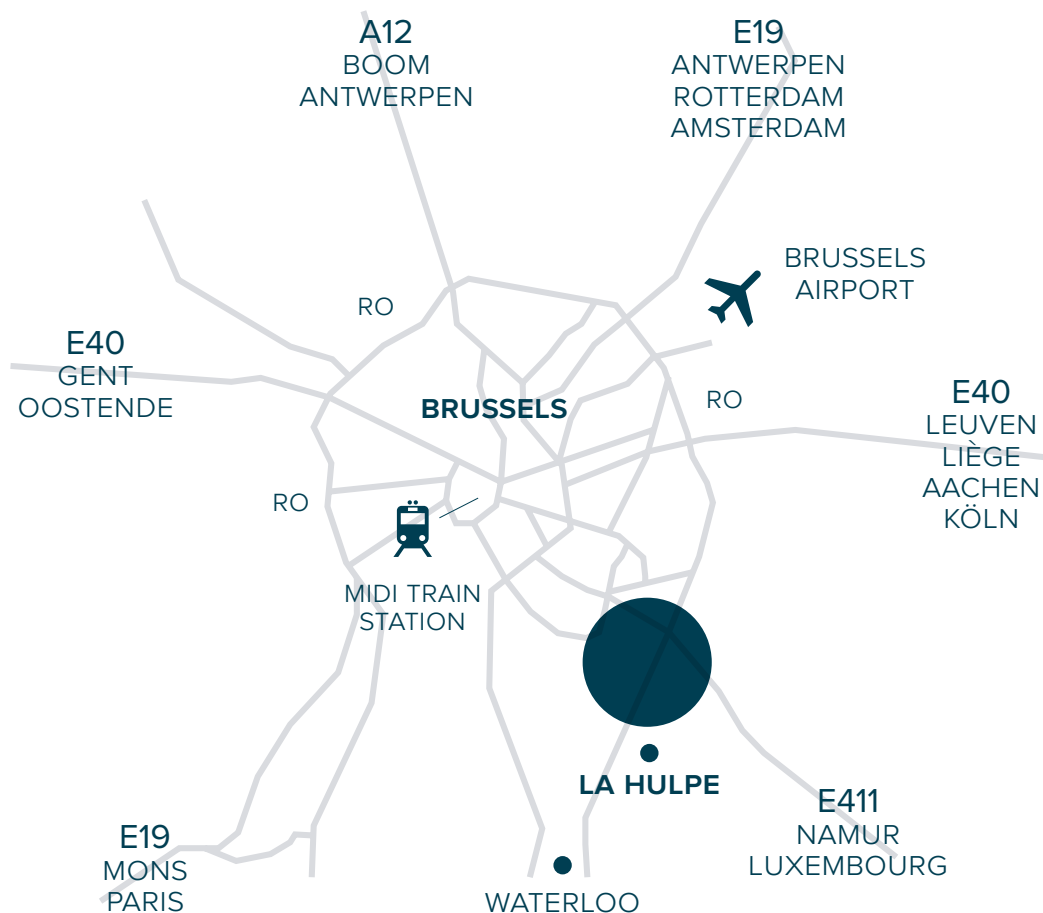


CAPACITY CHART

Meeting Room	Total m²	Total sq ft	Measures mts	Measures ft	Ceiling Height mts	Ceiling Height ft	Classroom	Theatre	Banquet 10	Reception	Boardroom	U-Shape	H-Square	Cabaret
EXCLUSIVE SPACE - THE ACADEMY														
Auditorium (First floor)**	108	354	13 x 8	-	3,3	10,8	36	-	-	-	-	-	-	-
Breakout (First floor)**	31	102	8.8 x 3.5	-	3,3	10,8	-	-	-	-	10	-	-	-
Breakout (First floor)**	30	98	8.6 x 3.5	-	3,3	10,8	-	-	-	-	14	-	-	-
Breakout (Ground floor)**	17	58	3.7 x 4.7	-	2,6	8,5	-	-	-	-	12	-	-	-
AUDITORIUMS														
Canopée**	495	5328	-	-	-	-	500	500	-	-	-	-	-	-
Baobab	354	3810	-	-	-	-	150	-	-	-	-	-	-	-
MEETING ROOMS (GROUND FLOOR)														
Amarante	112	1206	10.6 x 10.6	35x35	3,3	11	40	80	-	-	20	26	32	32
Bois dentelle	93	1001	8.8 x 10.6	29x35	3,3	11	40	60	-	-	16	24	32	30
Cherry	219	2357	25.2 x 8	83x26	3,3	11	80	132	-	-	52	-	44	77
Cherry 1	63	678	7.3 x 8	23x26	3,3	11	22	36	-	-	12	14	16	14
Cherry 2	113	1216	10.6 x 7.9	35x26	3,3	11	36	60	-	-	20	18	24	18 (3x6)
Cherry 3*	43	463	7.3 x 8	23x26	3,3	11	18	24	-	-	12	14	16	14
Cocobolo	260	850	24.4 x 10.6	80x35	3,3	11	130	180	-	-	46	52	60	80
Cocobolo 1	112	367	10.6 x 10.6	35x35	3,3	11	40	80	-	-	16	26	32	36
Cocobolo 2	74	242	7 x 10.6	23x35	3,3	11	24	50	-	-	16	16	24	24
Cocobolo 3	74	242	7 x 10.6	23x35	3,3	11	24	50	-	-	16	16	24	24
Delfino	55	180	10.6 x 5.2	35x17	3,3	11	16	35	-	-	20	18	20	-
Ebène	55	180	10.6 x 5.2	35x17	3,3	11	16	35	-	-	20	18	20	-
Nourishment Hub	187	2012	10.6 x 17.7	35x58	2,7	9	-	-	-	-	-	-	-	-
Private Nourishment Hub	36	387	7 x 5.2	22x17	3,3	11	-	-	-	45	8	8	-	-
Flamboyant	112	367	10.6 x 10.6	35x35	3,3	11	40	80	-	-	20	26	32	36
Ginko	170	557	16 x 10.6	52x35	3,3	11	80	120	-	-	30	38	48	60
MEETING ROOMS (FIRST FLOOR)														
Teck	170	1830	16 x 10.6	52x35	3,3	11	80	120	-	-	30	38	48	60
Imbuia	170	1830	16 x 10.6	52x35	3,3	11	80	120	-	-	30	38	48	60
Palissandre	112	1206	10.6 x 10.6	35x35	3,3	11	40	80	-	-	20	26	32	36
Mahogany	112	1206	10.6 x 10.6	35x35	3,3	11	40	80	-	-	24	26	32	36
Snakewood	93	1001	8.8 x 10.6	29x35	3,3	11	40	60	-	-	16	24	32	30
Jatoba	93	1001	8.8 x 10.6	29x35	3,3	11	40	60	-	-	18	24	32	30
Kawi	74	797	7 x 10.6	23x35	3,3	11	24	50	-	-	16	16	24	24
Rosewood	74	797	7 x 10.6	23x35	3,3	11	24	50	-	-	16	16	24	24
Mangrove 1	36	388	7 x 5.2	23x17	3,3	11	12	26	-	-	12	12	14	-
Mangrove 2	40	431	7.6 x 5.2	25x17	3,3	11	12	26	-	-	12	12	14	-
Mangrove 3	46	495	8.9 x 5.2	29x17	3,3	11	16	26	-	-	12	14	16	-
Mangrove 4	55	592	10.6 x 5.2	35x17	3,3	11	16	35	-	-	18	18	20	-
BREAKOUT ROOMS (OASIS FLOOR)														
Pomegranate	66	710	9.4 x 7	31x23	2,5	8	24	40	-	-	16	20	24	24
Tamarillo	65	700	9.4 x 6.9	31x23	2,5	8	24	36	-	-	16	16	20	24
Pitaya	64	689	8.8 x 7.2	29x24	2,5	8	24	36	-	-	16	20	24	18
Acerola*	56	603	9.7 x 5.8	32x19	2,6	9	20	42	-	-	16	20	24	18
Carambole	51	549	9.7 x 5.2	32x17	2,5	8	16	30	-	-	16	18	22	18
Fig	51	549	9.7 x 5.3	32x17	2,6	9	16	30	-	-	16	16	20	18
Guava	51	549	9.7 x 5.3	32x17	2,6	9	16	30	-	-	16	16	20	18
Kumquat	51	549	9.7 x 5.2	32x17	2,6	9	16	30	-	-	16	16	20	18
Kiwano	51	549	9.7 x 5.3	32x17	2,6	9	16	30	-	-	16	16	20	18
Litchi	51	549	9.7 x 5.2	32x17	2,6	9	16	30	-	-	16	16	20	18
Mango	51	549	9.7 x 5.3	32x17	2,6	9	16	30	-	-	16	16	20	18
Ramboutan	51	549	7 x 7.3	23x24	2,5	8	16	30	-	-	16	16	20	24
REDWOOD														
Redwood**	750	8073	39.6 x 18.9	131x62	3,3	11	300	600	570	625	78	114	128	318 at tables of 8
Redwood 1**	169	1819	11.6 x 15.4	38x50	3,3	11	70	120	110	140	-	34	44	60 at tables of 8
Redwood 2**	162	1744	10.8 x 15.4	35x50	3,3	11	70	120	110	140	-	36	46	50 at tables of 8
Redwood 3**	258	2777	16.9 x 15.4	54x50	3,3	11	120	180	200	215	-	52	60	80 at tables of 8

* without daylight

** outside of conference centre



MAP & DIRECTIONS

Dolce La Hulpe Brussels is located only 15 km (9 miles) southeast from central Brussels and Brussels Airport. Brussels' Midi train station which connects travellers with London, Paris, Amsterdam and Cologne via high speed train network is only a 25-minute drive away. For more detailed directions, please visit: www.dolcelahulpe.com/en



DOLCE LA HULPE BRUSSELS
THE DOLCE HOTEL COLLECTION

135, CHAUSSÉE DE BRUXELLES
1310 LA HULPE
T. + 32 (0)2 290 98 24
WWW.DOLCELAHULPE.COM