



DOLCE CHANTILLY
THE DOLCE HOTEL COLLECTION



DOLCE CHANTILLY

Located 40km by car from Paris lays Dolce Chantilly, a beautiful conference hotel and golf resort with vast grounds, close to Chantilly's hippodrome and the Château de Chantilly.



Guest Rooms & Suites

All of the 200 guest rooms, including 25 suites are comfortably equipped and offer a stunning view over the golf course and the ravishing grounds of the hotel.

- | BEDROOMS | ROOM FACILITIES |
|---|---|
| <ul style="list-style-type: none"> ▪ 92 Classic Rooms ▪ 20 Rooms with Terrace ▪ 63 Superior Rooms ▪ 21 Executive Rooms ▪ 4 Suites ▪ Connecting Rooms for Families | <ul style="list-style-type: none"> ▪ King Size bed – twin beds ▪ Flat screen television ▪ Work desk ▪ Wireless internet ▪ Mini-bar ▪ Iron and board ▪ Bathrooms with rain shower or bath ▪ Coffee & tea making facilities |

Restaurant and Bars

Dine with a view of our verdant natural surroundings in our 3 restaurants.

- « La Veranda » Restaurant : 200 guests
- « Donatello » Restaurant – Bar : 50 guests
- « Le Swing » club house with terrace facing the outdoor pool

On-site Activities

Whether you want to relax or stay active, there's always plenty of things to do at Dolce Chantilly.

- | | |
|---|---|
| <ul style="list-style-type: none"> ▪ 18 holes golf course, PAR 72 with water practice ▪ Heated outdoor and indoor pools ▪ Fitness centre and sauna ▪ Steam bath ▪ Beach volley court ▪ Tennis court | <ul style="list-style-type: none"> ▪ Dragon boat races on the grand canal of the castle ▪ Introduction to Polo ▪ Castle of Chantilly and its Le Nôtre park ▪ Horse Museum and the Grand Stables |
|---|---|

Meeting & Events

The conference centre at Dolce Chantilly is certified by the International Association of Conference Centers and also received the IACC green star label. All of the 22 meeting rooms have daylight and are equipped with state-of-the-art A/V equipment.

Capacity

- 2000 sqm meeting space
- 22 meeting rooms
- Salon « Chantilly » with space for 300 pax

Meeting rooms/ Seating capacities

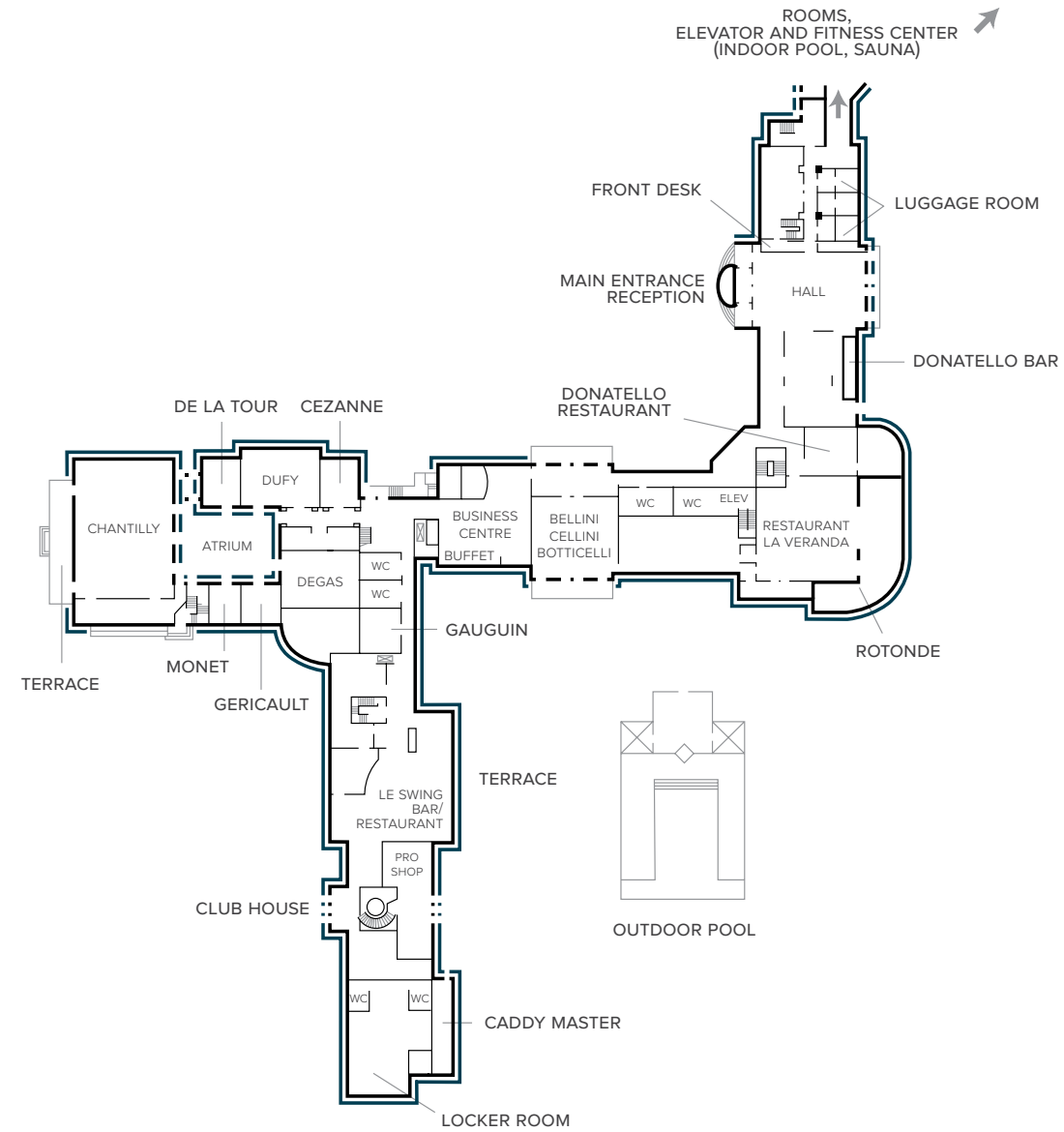
Meeting Room	Dimension	Square Feet (m²)	Ceiling Height	Classroom	Conference	U-Shape	Hollow Sq.	Theatre	Banquet	Cabaret 6 pax/ table 7 pax/ table
CONFERENCE ROOMS										
Bellini (A)	40 x 20 (11.8 x 6.2)	800 (75)	11.5 (3.5)	28/32	20/24	20/24	24/28	36/50	40	(4 tables) 24/28
Boticelli (B)	40 x 20 (11.8 x 6.2)	800 (75)	11.5 (3.5)	28/32	20/24	20/24	24/28	36/50	40	(4 tables) 24/28
Cellini (A + B)	40 x 40 (12.4 x 12.4)	1600 (150)	11.5 (3.5)	84/96	26/36	40/50	50/60	120/180	80	(10 tables) 60/70
Chantilly	67.4 x 47.24 (20.55 x 14.4)	3184 (296)	12.46 (3.8)	140/160	40/60	50/60	60/75	150/280	250	(22 tables) 132/154
Meissonnier	47.73 x 30.18 (14.55 x 9.20)	1440 (134)	9.71 (2.96)	48/60	24/30	32/40	40/50	80/120		(9 tables) 54/63
Renoir	47 x 30.18 (14.34 x 9.20)	1418 (132)	9.67 (2.95)	48/60	24/30	32/40	40/50	80/120		(9 tables) 54/63
Dufy	37 x 27.55 (11.30 x 8.40)	1019 (95)	12.46 (3.8)	40/50	20/30	28/36	36/46	60/100		(6 tables) 36/42
Degas	37.9 x 27.4 (11.55 x 8.35)	1038 (96)	12.5 (3.8)	40/50	20/30	28/36	36/46	60/100		(6 tables) 36/42
Van Gogh	37.2 x 27.55 (11.35 x 8.4)	1025 (95)	8.82 (2.69)	40/50	20/30	28/36	36/46	60/100		(6 tables) 36/42
Rioult	37.2 x 27.55 (11.35 x 8.4)	1038 (96)	8.75 (2.67)	40/50	20/30	28/36	36/46	60/100		(6 tables) 36/42
BREAKOUT ROOMS										
De La Tour	23.12 x 18.37 (7.05 x 5.60)	424 (39)	12.46 (3.8)	12/16	12/14	14/18	20/24	20/25		(2 tables) 12/14
Toulouse Lautrec	23.12 x 16.8 (7.05 x 5.12)	388 (36)	9.12 (2.78)	18/21	12/14	14/18	20/24	20/25		(2 tables) 12/14
Vermeer	23.22 x 16.66 (7.08 x 5.08)	387 (36)	9.08 (2.77)	12/16	16/20	14/18	20/24	20/25		(2 tables) 12/14
Cézanne	22.96 x 18.37 (7 x 5.60)	421 (39)	12.46 (3.8)	18/21	12/14	14/18	20/24	20/25		(2 tables) 12/14
Rubens	22.96 x 18.37 (7 x 5.60)	421 (39)	9.15 (2.79)	12/16	16/20	14/18	20/24	20/25		(2 tables) 12/14
André Mare	18.2 x 14.27 (5.55 x 4.35)	260 (24)	11.12 (3.39)		10/12	10/12	12/14	15/20		(2 tables) 12/14
Gauguin	19.19 x 18.2 (5.85 x 5.55)	349 (32)	7.44 (2.27)		10/12	10/12	12/14	15/20		(2 tables) 12/14
Monet	18.2 x 18.2 (5.55 x 5.55)	331 (31)	12.4 (3.78)	10/12	10/12	12/14	14/16	18/25		(2 tables) 12/14
Turner	18.2 x 17.94 (5.55 x 5.47)	326,5 (30)	9.12 (2.78)	10/12	10/12	10/12	12/14	15/20		(2 tables) 12/14
Velasquez	18.37 x 18.2 (5.60 x 5.55)	334 (31)	9.18 (2.8)	10/12	10/12	10/12	12/14	18/25		(2 tables) 12/14
Géricault	18.3 x 17.88 (5.58 x 5.45)	327 (30)	12.6 (3.84)	10/12	10/12	12/14	14/16	18/25		(2 tables) 12/14
Seurat	18.2 x 14.53 (5.55 x 4.43)	264 (24)	9.25 (2.82)		10/12	10/12	12/14	18/25		(2 tables) 12/14
1st FL. CLUBHOUSE										
Albatros	45 x 40 (13.7 x 12.2)	1800 (175)	22.5 (6.8)	72/96	28/34	40/46	50/58	112/160	80	(10 tables) 60/70

Ergonomic chairs/ Banquet Chairs



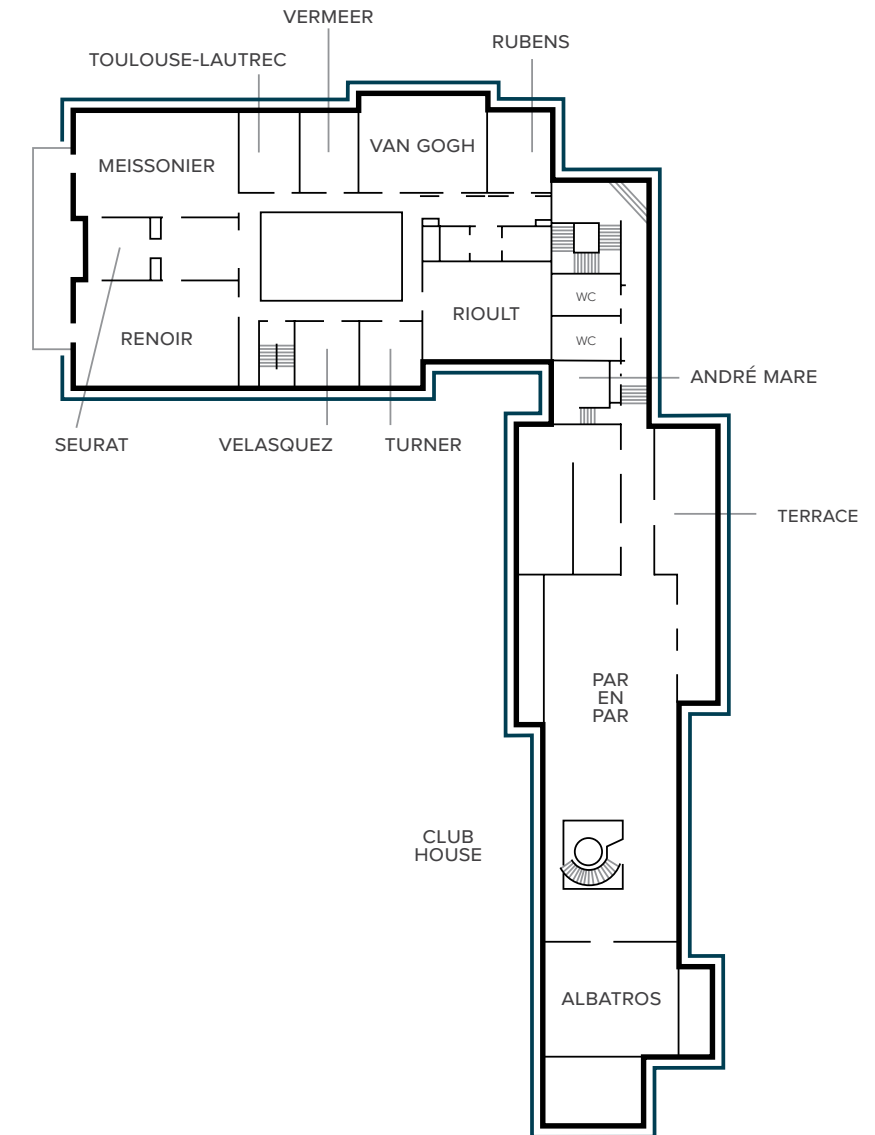
Floor Plans

GROUND FLOOR



Floor Plans

FIRST FLOOR





DOLCE CHANTILLY
THE DOLCE HOTEL COLLECTION

Accès plan

