



DOLCE
HOTELS AND RESORTS™
FRÉGATE PROVENCE

ROUTE DE BANDOL 83270 · SAINT CYR SUR MER, FRANCE · T +33 (0)4 94 29 39 36 · F +33 (0)4 94 29 39 40 · DOLCEFREGATE.COM



Dolce Frégate Provence

Located between the Marseille and Toulon airports and 20 minutes from the Toulon TGV station, the hotel Dolce Frégate Provence offers 163 rooms overlooking two golf courses and the Mediterranean Sea.

Hotel – 163 Rooms

Our rooms each have a terrace overlooking the sea, the golf course or the pine forest.

ROOMS

- 49 Deluxe Rooms with a terrace with panoramic views of the golf course and the sea
- 34 Superior Rooms with sea view terrace
- 11 Classic Rooms with terrace
- 5 Junior Suites with terrace
- 1 Frégate Suite with terrace
- 33 Apartments with terrace
- 15 Country House Suites opening onto a private patio terrace
- 15 Country House Rooms with private terrace

ROOM FACILITIES

- Spacious rooms of 28m² to 60m²
- Bathrooms with shower or bathtub
- Large double bed (180 cm) or 2 single beds (2 x 90 cm)
- Flat screen TV
- Working table
- Non-smoking rooms
- Minibar and safe
- Wireless high speed broadband internet (100 megs)

Seminars and events

The Dolce Frégate Provence conference center is certified by the International Association of Conference Centers (IACC) and also received the IACC's Green Star Medal.

Expertise and Dolce standards

- Conference center with total area of 942 m²
- A reception desk specifically dedicated to the conference center
- 15 meeting rooms with natural light
- Permanent & evolutive coffee break area
- A conference planner and audiovisual equipment dedicated to your event
- Seasonal group menus, chef's choice
- Outdoor exhibition area of 800 m²
- Wireless high speed broadband internet (100 megs)
- **Exclusive: organize your subcommittee on the terrace!**

Restaurants & Bars

Chef William Maurice, who supports local agriculture, works only with seasonal products from regional and French producers. Restaurant accredited by the Culinary College of France, testimony and guarantee of quality cuisine.

- "Le Salon Provençal" and "La Veranda" (up to 200 settings)
- "Le Mas des Vignes", gourmet restaurant (up to 50 settings)
- "La Restanque" club house with a terrace overlooking the golf course
- "Le Swing" hotel bar, terrace overlooking the golf course and the sea

On-site activities

- 18-hole, par 72 golf course for advanced players
- 9-hole, par 29 golf course for beginners
- Golf Academy: all levels, team-building courses
- Heated indoor pool, sauna, whirlpool and fitness room (open from 6:30 to 22:00)
- Omnisens wellness center
- Cascading swimming pools and a outdoor swimming pool reserved for Bastides guests
- 1 pétanque pitch
- 3 tennis courts
- Frégate beehives 12 beehives located on the golf course, visits by request

On-site team-building activities

- Golf introductions and activities with the Golf Exclusive Academy
- Wine tasting
- Golf competitions
- Pétanque Aperitif, Chef's Aperitif, Golf Aperitif
- Boot Camp
- Triple P, Tripot Mafieux gambling games...
- Footgolf
- Cooking classes
- Koh-Lanta, Treasure hunt
- Rugby Challenge in RCT country

Team-building in the surrounding area

- Cove Olympics
- Cooking classes at a Bastide
- Nautical activities
- Bacchus Olympics
- Calanques de Cassis, Iles des Embiez
- Provence Markets, Craft fairs
- Wine tasting at other Domaines in Bandol and Cassis
- Visit to Rade de Toulon naval base
- Gambling Casino
- MUSEM, Marseille



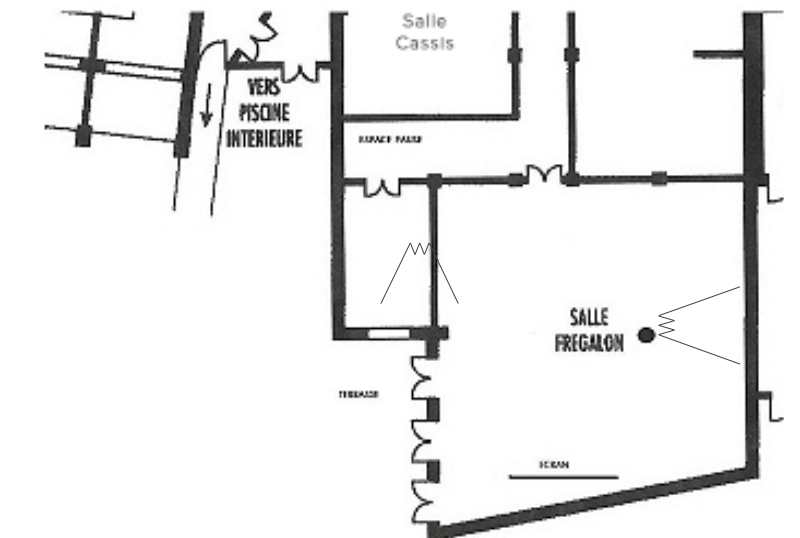
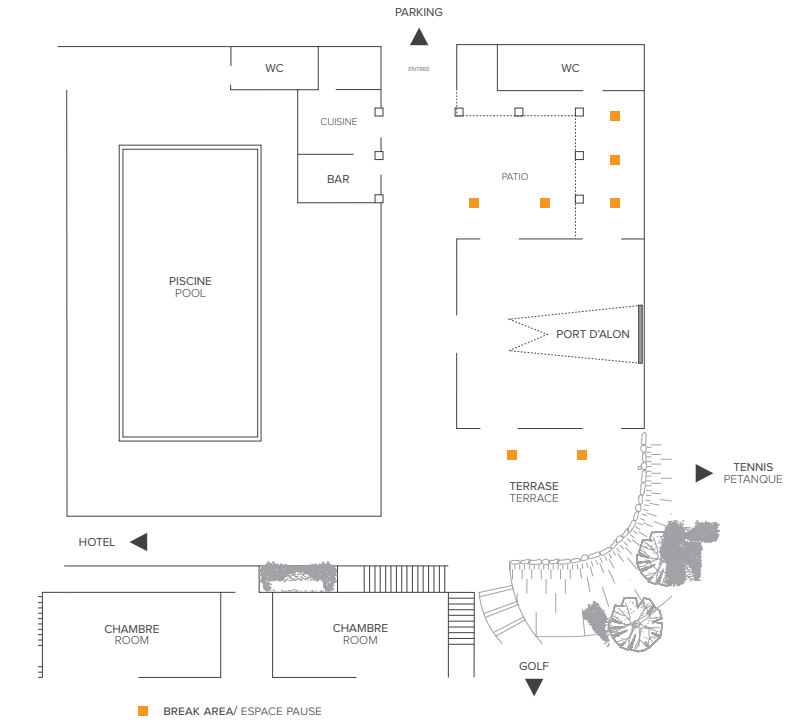
Room capacity

Meeting Rooms Salles de Réunion	Measurements mts Mesures en m ²				Measurements ft Mesures en pieds				Theatre Théâtre	Classroom Classe	U-shape U	Doble U Double U	Triple U Triple U	Conference Conférence	Cabaret Cabaret
	m ²	L	W	H	sq ft	L	W	H							
Main Building															
Frégate	225	15	15	3,5	2422	49	49	11,7	200	130	44	76	97	64	15 tables
Alan Shepard	159	12,6	12,6	3,25	1712	41	41	10,6	130	90	36	60	70	48	10 tables
Frégalon	110	11	10	3	1184	36	32	10,2	100	60	28	40	-	36	6 tables
Port d'Alon	81	9	9	3	871	96	96	10,2	70	40	30	-	-	36	4 tables
Bandol	67	10,2	6,6	2,95	721	33	22	9,8	50	32	26	-	-	30	4 tables
Cassis	49,5	6,8	5,8	2,8	533	22	19	9	30	20	16	-	-	18	3 tables
Saint-Cyr	47	8	5,6	2,95	506	26	16	9,8	35	20	20	-	-	22	3 tables
Cannes	40	9,2	4,5	2,65	431	30,6	15	8,8	-	-	-	-	-	18	-
Saint-Tropez	28	6,6	4,3	2,6	302	22	14	8,6	22	14	14	-	-	14	-
Toulon	28	6,6	4,3	2,6	302	22	14	8,6	22	16	14	-	-	16	-
Sainte-Maxime	28	7,5	3,8	2,8	302	25	12,6	9,3	15	16	14	-	-	16	-
Nice	20	4,5	4,5	2,6	216	15	15	8,6	15	12	8	-	-	10	-
Grasse	20	4,5	4,5	2,6	216	15	15	8,6	15	12	8	-	-	10	-
Marseille	20	4,8	4,3	2,6	216	16	16	8,6	10	12	8	-	-	10	-
Saint-Raphaël	20	7,5	3,8	2,8	302	25	12,6	9,3	-	-	6	-	-	8	-
Le Chai*	100	12,3	7,5	3,2	1076	39	24	10,4	80	40	35	-	-	50	-
Le Pavillon*	340	22	14 à 15	2,5 à 5	3659	72	45 à 49	8,5 à 16	350	150	100	-	-	300	250

* Ces salles se situent à proximité de l'hôtel, à 5 min à pieds.
 * These rooms are situated in a place near the hotel, only 5 min walking.

Floor Plans

Bastides

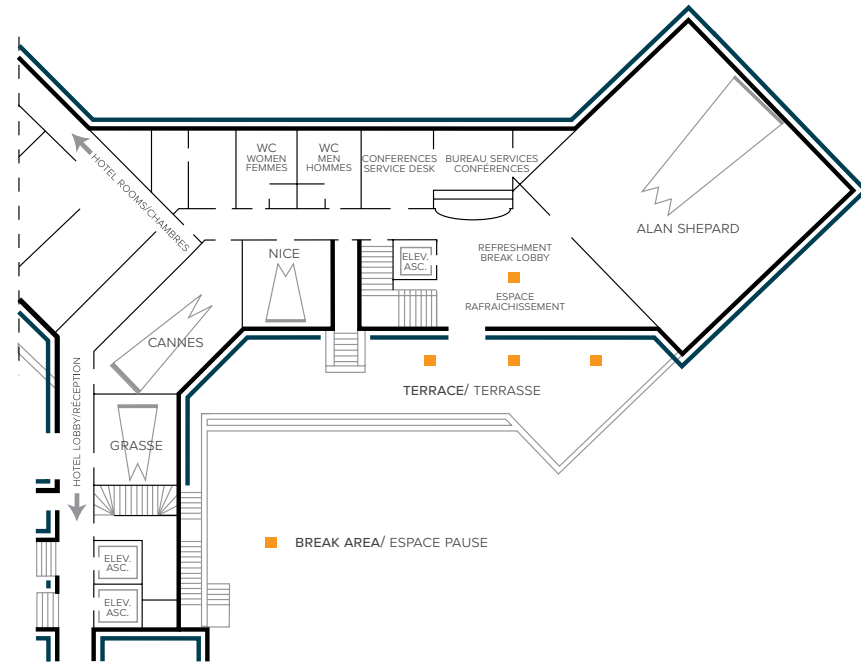


Level 1
Frégalon Room + Cassis Room



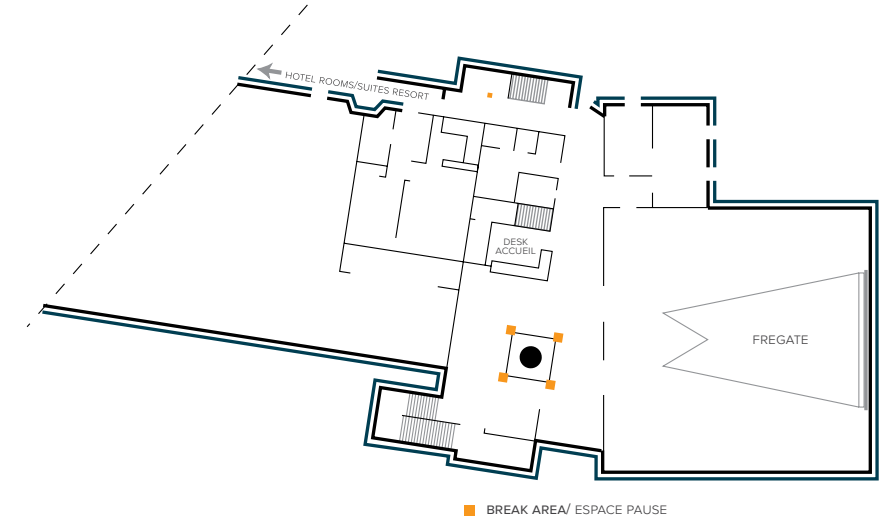
Floor Plans

Level 5



Floor Plans

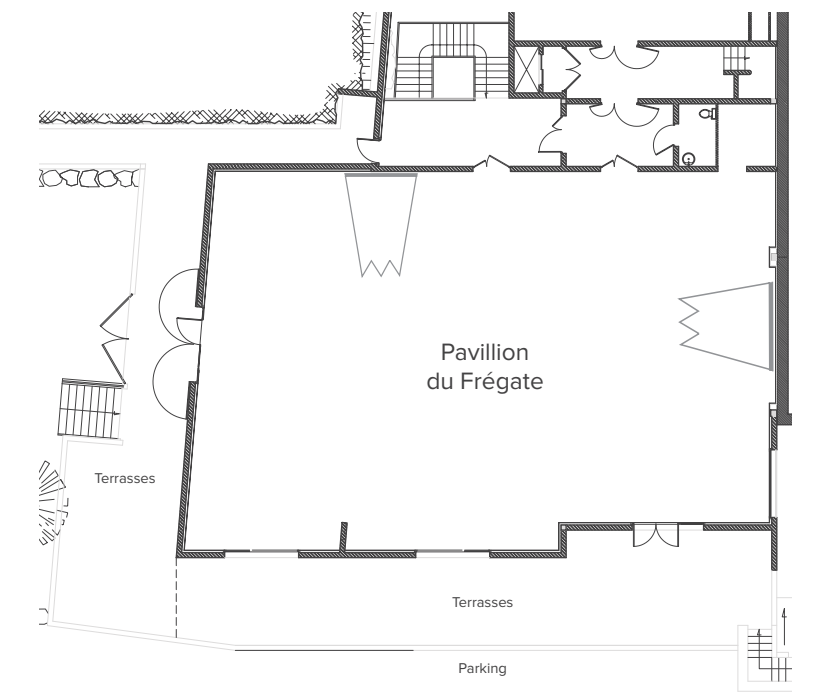
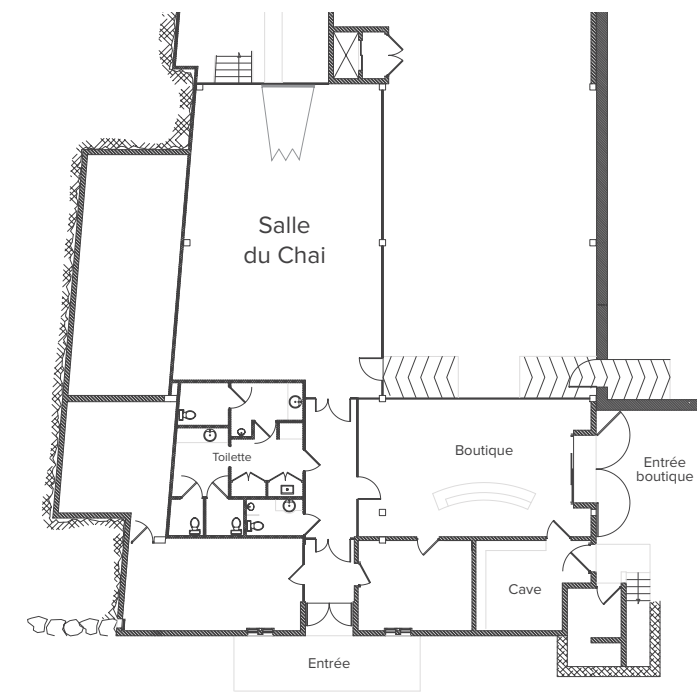
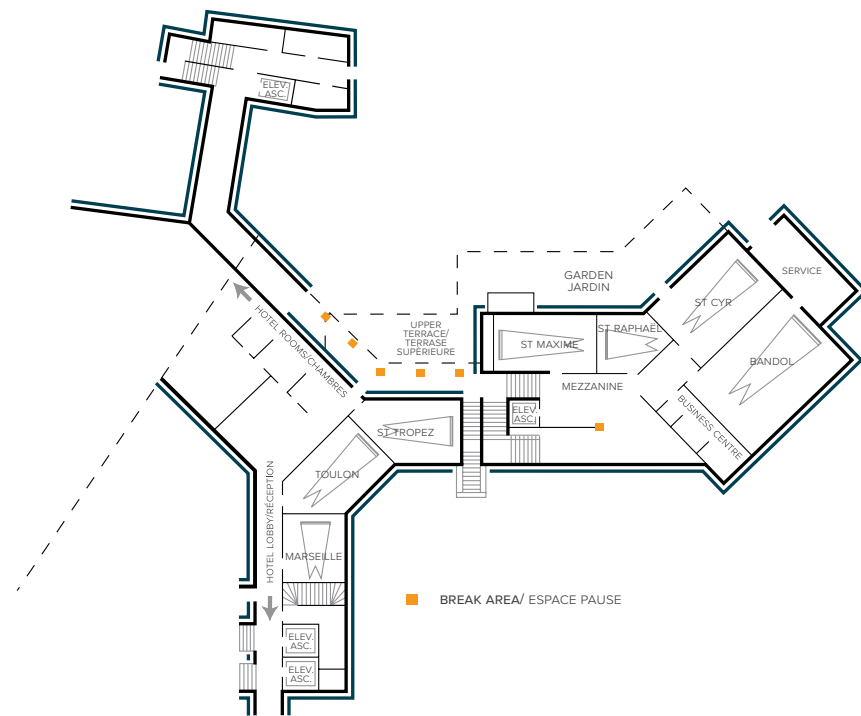
Level 8



Chai Room

Pavillon de Frégate

Level 6



Location map

