



the art of inspirationSM

Dolce by Wyndham Versailles

OPENING END 2023

Located in the heart of the Domaine du Montcel, in an inspiring haven of greenery, the Dolce by Wyndham Versailles is an exceptional hotel located south west of Paris, a few steps from HEC School of Management, at 10 minutes from Versailles and the Saclay innovation and research Centre; 30 minutes from Paris-Orly airport, the business districts of Paris-La Défense and Rueil 2000, and the Champs-Élysées avenue in Paris.

With 18 meeting rooms, 178 rooms, suites and apartments, 2 restaurants, a bar, a Spa by Sothys, in a majestic park of more than 14 hectares including a listed English Garden, the property offers a subtle balance between French elegance and contemporary comfort.

ACCOMMODATION

The Dolce by Wyndham Versailles offers 178 accommodations divided into 150 rooms, 14 suites and 14 apartments elegantly decorated in a contemporary style, highlighted by noble materials and furniture with a refined design.

Room facilities:

- King/Queen size bed or twin beds
- Flat-screen HD TV
- Large working desk
- Refrigerator
- Tea and espresso machine
- Sothys luxury guest toiletries
- Bathrobe and slippers
- Free high-speed wireless internet access

RESTAURANTS & BAR

The dining areas, with a total capacity of 180 people, are in the historical wing of the Chateau, offering a magnificent view on the property. In adjoining rooms, two restaurants, one of which is a Brasserie chic, offer a menu or a selection of dishes around the open kitchen.

The bar is extended by a beautiful terrace that can accommodate 150 people, overlooking the gardens.

ACTIVITIES

- Spa by Sothys offering 7 treatment rooms
- An indoor pool extending to an outdoor heated pool
- Fitness center
- Hammam
- Sauna
- Ice room

MEETINGS & EVENTS

Host a productive meeting in the hotel's 1800 sqm Conference Centre, which offers state-of-the-art technology supported by an onsite A/V team, and thoughtful food for the body and mind, served across Dolce's signature coffee break concept — Nourishment Hubs.

The Ballroom can be divided into 4 and through its large bay windows, offers an exceptional view onto the bicentennial cedar.



© FID



the art of inspirationSM

CAPACITY CHART

| Floor | Meeting rooms | Area sqm | Area sq ft | | | | | | | |
|----------------------|--------------------|----------|------------|-----|-----|----|----|-----|-----|-----|
| Chateau Garden level | Baccarat | 548 | 6006 | 350 | 220 | * | * | 180 | 350 | 450 |
| Chateau Garden level | Baccarat A + B + C | 305 | 3283 | 200 | 120 | * | * | 100 | 250 | 300 |
| Chateau Garden level | Baccarat A + B | 160 | 1722 | 110 | 70 | * | * | 60 | 130 | 160 |
| Chateau Garden level | Baccarat C + D | 359 | 3864 | 240 | 145 | * | * | 120 | 250 | 320 |
| Chateau Garden level | Baccarat A | 70 | 753 | 45 | 30 | 25 | 25 | 30 | * | 70 |
| Chateau Garden level | Baccarat B | 90 | 969 | 60 | 40 | 30 | 30 | 35 | * | 90 |
| Chateau Garden level | Baccarat C | 145 | 1561 | 100 | 60 | 50 | 50 | 50 | 100 | 120 |
| Chateau Garden level | Baccarat D | 214 | 2303 | 145 | 90 | 70 | 70 | 70 | 150 | 200 |
| Chateau Garden level | La Glacerie | 39 | 420 | * | * | * | 12 | * | * | * |
| Chateau Garden level | Aubusson | 98 | 1055 | 65 | 40 | 32 | 32 | 35 | * | * |
| Chateau Garden level | Les Gobelins | 66 | 710 | 45 | 26 | 22 | 22 | 22 | * | * |
| Chateau Garden level | Sèvres | 64 | 689 | 43 | 26 | 22 | 22 | 22 | * | * |
| Chateau Garden level | Saint-Louis | 46 | 495 | * | * | * | 15 | * | * | * |
| Chateau Ground floor | Les Indiennes A | 49 | 527 | 35 | 20 | 15 | 15 | 15 | * | * |
| Chateau Ground floor | Les Indiennes B | 54 | 581 | 35 | 20 | 15 | 15 | 15 | * | * |
| Chateau Ground floor | Les Indiennes | 103 | 1109 | 70 | 40 | 35 | 35 | 35 | * | * |
| Chateau Ground floor | Taffetas | 19 | 205 | * | * | * | 8 | * | * | * |
| Chateau Ground floor | Madras | 17 | 183 | * | * | * | 8 | * | * | * |
| Chateau Ground floor | Siamoise | 59 | 635 | 40 | 25 | 20 | 20 | 20 | * | * |
| Chateau Ground floor | Cotonnades | 13 | 140 | * | * | * | 6 | * | * | * |
| Chalet Ground floor | Arman A | 71 | 764 | 45 | 30 | 26 | 26 | 26 | * | * |
| Chalet Ground floor | Arman B | 113 | 1216 | 75 | 45 | 38 | 38 | 38 | * | * |
| Chalet Ground floor | Arman | 184 | 1981 | 120 | 74 | 60 | 60 | 60 | * | * |
| Chalet Ground floor | César | 31 | 334 | * | * | * | 14 | * | * | * |

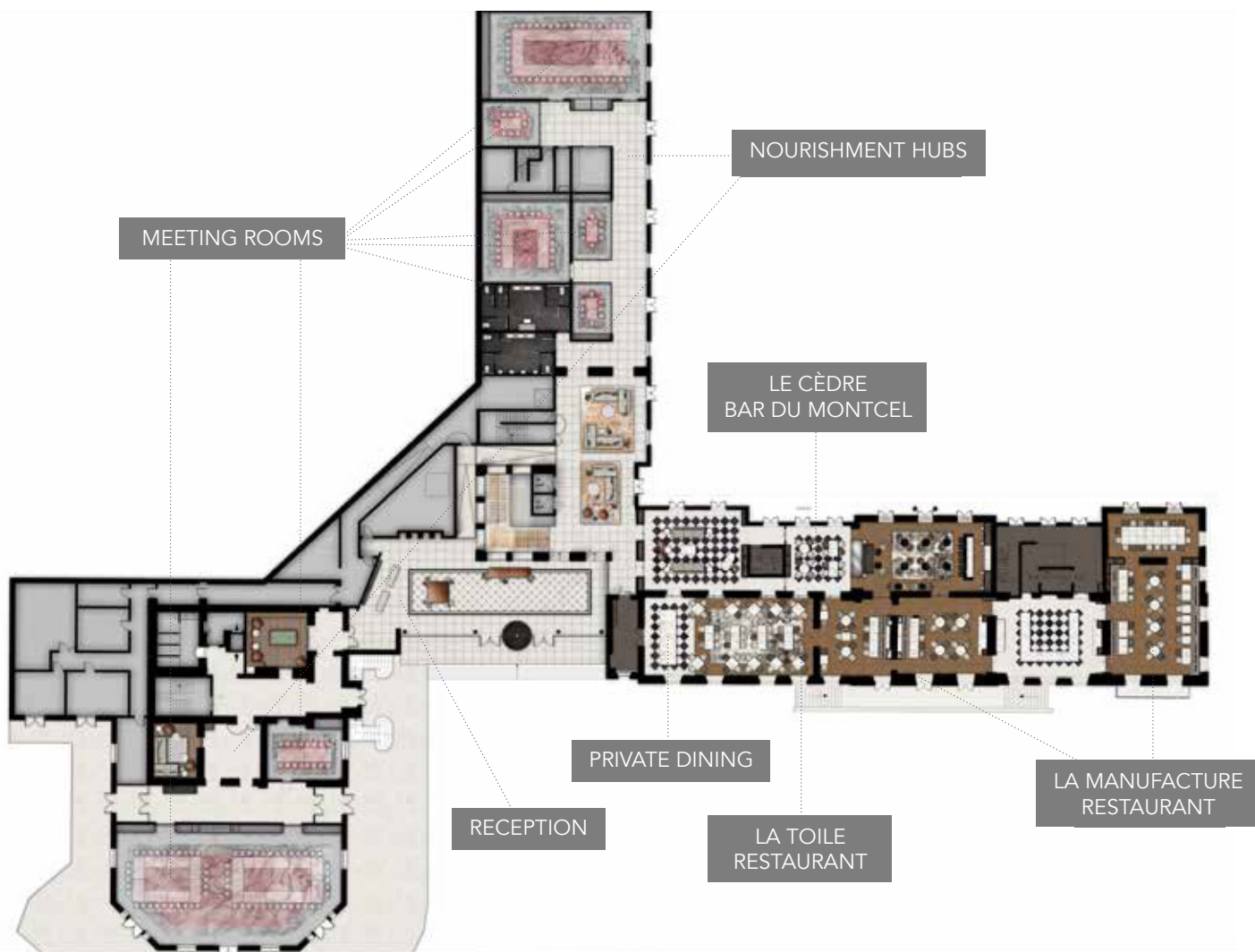


© F.I.D.



*the art of inspiration*SM

FLOOR PLANS

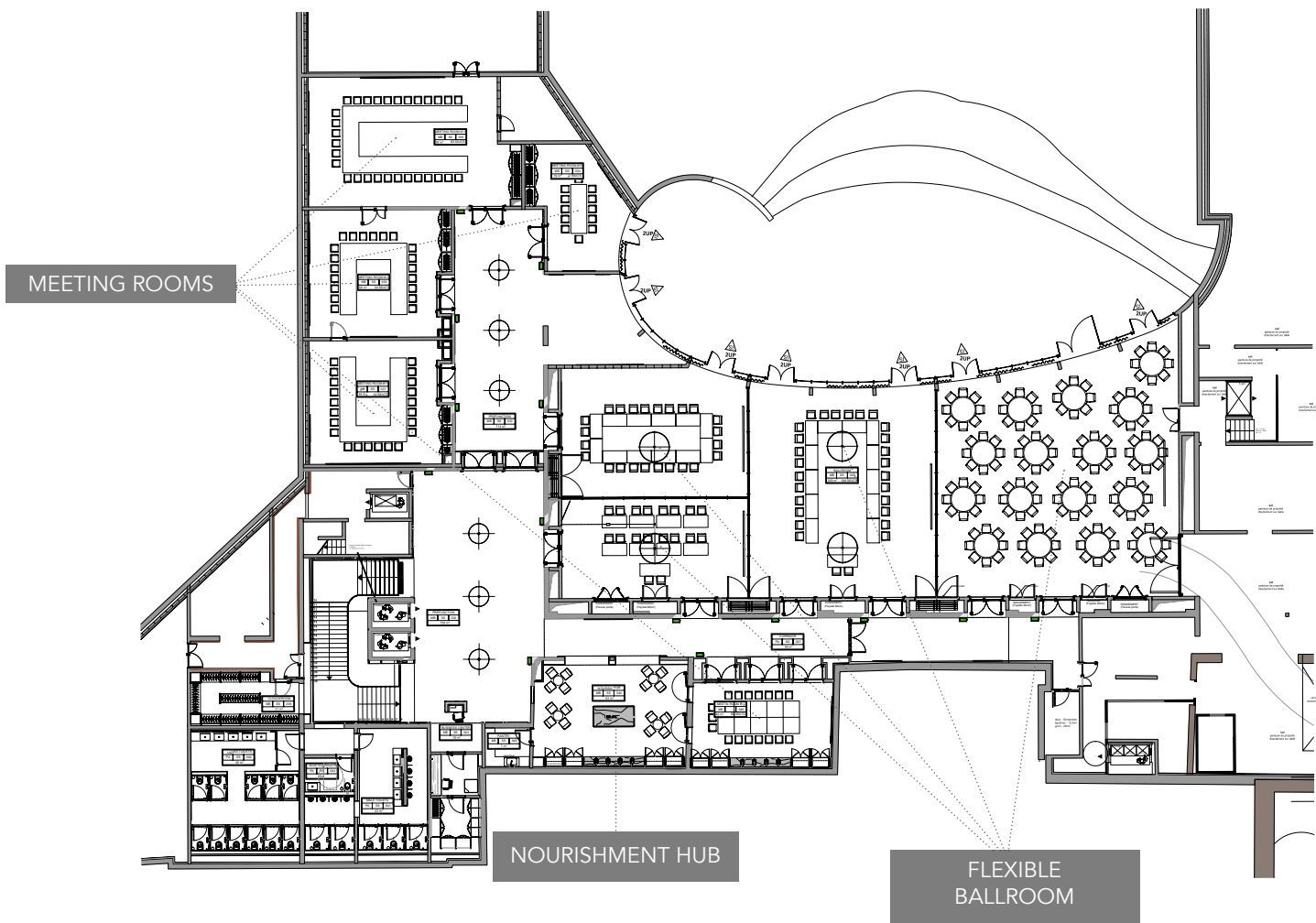


GROUND FLOOR



*the art of inspiration*SM

FLOOR PLANS



GARDEN LEVEL