



# DOLCE CAMPOREAL LISBOA

**Dolce CampoReal Lisboa, is nestled in the Torres Vedras district, 30 minutes to the north of Lisbon and 20 minutes from the beaches.**

## Guest Rooms & Suites

Our elegant and modern accommodation includes 151 hotel rooms and suites, and also apartments, townhouses and villas which can have from 1 to 4 bedrooms. Be amazed by the protected landscape of Socorro and Archeira mountains and enjoy the wonderful views over our 18-hole golf course.

### BEDROOMS

- 45 Deluxe
- 88 Superior Deluxe
- 7 Premium
- 2 Suites
- 8 Duplex Suites
- 1 Royal Suite
- Connecting rooms for families
- Rooms and Suites are all non-smoking

### ROOM FACILITIES

- Flat screen television
- Work desk
- Wireless internet
- Mini-Bar
- Iron and board
- Large bathrooms with separate rain shower and bath
- Room service

## Restaurants and Bars

Dine on Portuguese and international cuisines in casual and sophisticated settings.

- “Manjapão” buffet restaurant
- “Grande Escolha ” à la carte cuisine restaurant
- “Garden Terrace” restaurant and bar
- “Wellington Bar”
- “Eagle Pool Bar” (seasonal)

## On-site Activities

Whether you want to relax or stay active, there's always plenty to do at Dolce CampoReal Lisboa.

- Fitness centre available 24h
- Indoor and 2 outdoor swimming pools
- Tennis courts
- Donald Steel designed Golf Course – 18 holes Par 72
- Mandalay Wellness & Spa – 700 m<sup>2</sup> and 7 treatment rooms
- Kids Club – Activities for children
- Center “Clube Aventura” – Teambuilding and outdoor activities

## Local Activities and team building

- Tour Lisbon wine region and discover the wine production history
- Visit the beaches of Santa Cruz, one of the best European spots for surfing
- Explore the medieval town of Óbidos & its treasures

## Meeting & Events

The meeting rooms meet the standards established by the International Association of Conference Centers and offer conveniences including ergonomic chairs, tables with plug in system, top notch audiovisual equipments and wi-fi internet.





## Capacity chart

- 2150 m<sup>2</sup> (23 142 sq ft) of indoor meeting and banqueting area
- 23 flexible meeting rooms
- Plenary room of 489 m<sup>2</sup> (5263 sq ft) for up to 500 persons

| Meeting Rooms                             | Area           |       | Height |        | Dimensions |           |         |          | Theatre | Classroom | U Shape | Conference or Boardroom | Cabaret 6/per table | Reception/ Cocktail | Banqueting    |                 |
|---|----------------|-------|--------|--------|------------|-----------|---------|----------|---------|-----------|---------|-------------------------|---------------------|---------------------|---------------|-----------------|
|   | m <sup>2</sup> | sq ft | m      | ft     | length-m   | length-ft | width-m | width-ft |         |           |         |                         |                     |                     | Buffet 12 pax | Set Menu 12 pax |
| <b>Main Building</b>                      |                |       |        |        |            |           |         |          |         |           |         |                         |                     |                     |               |                 |
| CampoReal                                 | 489            | 5263  | 3,85   | 12,628 | 25,06      | 82        | 19,51   | 64       | 480     | 180       | 64      | 84                      | 126                 | 530                 | 300           | 360             |
| CampoReal 1                               | 242            | 2606  | 3,85   | 12,628 | 19,51      | 41        | 12,41   | 64       | 240     | 84        | 44      | 60                      | 72                  | 250                 | 144           | 180             |
| CampoReal 2                               | 83             | 893   | 3,85   | 12,628 | 12,26      | 40        | 6,77    | 22       | 77      | 30        | 20      | 28                      | 24                  | 100                 | 48            | 72              |
| CampoReal 3                               | 71             | 764   | 3,85   | 12,628 | 12,26      | 40        | 5,79    | 19       | 72      | 20        | 20      | 28                      | 24                  | 85                  | 36            | 60              |
| CampoReal 4                               | 83             | 891   | 3,85   | 12,628 | 12,26      | 40        | 6,75    | 22       | 77      | 30        | 20      | 28                      | 24                  | 100                 | 48            | 72              |
| CampoReal 2+3                             | 154            | 1658  | 3,85   | 12,628 | 12,56      | 40        | 12,26   | 41       | 160     | 60        | 28      | 44                      | 48                  | 160                 | 84            | 132             |
| CampoReal 3+4                             | 154            | 1655  | 3,85   | 12,628 | 12,54      | 40        | 12,26   | 41       | 160     | 60        | 28      | 44                      | 48                  | 160                 | 84            | 132             |
| CampoReal 2+3+4                           | 239            | 2575  | 3,85   | 12,628 | 19,51      | 40        | 12,26   | 64       | 240     | 84        | 44      | 60                      | 72                  | 250                 | 144           | 180             |
| Alentejo                                  | 123            | 1320  | 3,20   | 10,496 | 11,32      | 37        | 10,83   | 36       | 112     | 40        | 24      | 36                      | 36                  | 140                 | 72            | 108             |
| Vina                                      | 78             | 837   | 3,20   | 10,496 | 9,59       | 31        | 8,11    | 27       | 70      | 24        | 20      | 20                      | 30                  | 100                 | 48            | 50              |
| Lusitano                                  | 30             | 328   | 3,20   | 10,496 | 6,32       | 21        | 4,82    | 16       | 24      | 8         | 6       | 8                       | 6                   | 25                  | 12            | 12              |
| 6 duplex Duo Meeting Rooms                | 18             | 189   | 2,40   | 7,872  | 4          | 13        | 4,4     | 14       | n.a.    | n.a.      | n.a.    | 10                      | 6                   |                     |               |                 |
| 7 Pateo Meeting Rooms                     | 20             | 215   | 2,40   | 7,872  | 4          | 13        | 5       | 16       | n.a.    | n.a.      | n.a.    | 10                      | 6                   |                     |               |                 |
| Library                                   | 74             | 795   | n.a.   | n.a.   | 11,37      | 37,29     | 6,50    | 21,32    | 70      | 24        | 20      | 20                      | 24                  | 90                  | 48            | 60              |
| Oeste                                     | 56             | 714   | 3,00   | 10,00  | 10,20      | 33,46     | 6,90    | 22,63    | 50      | 24        | 20      | 20                      | 24                  | 80                  | 24            | 48              |
| Grande Escolha                            | 95             | 1023  | 3,15   | 10,33  | 12,34      | 40,48     | 7,71    | 25,29    | 60      | 18        | 16      | 20                      | 24                  | 100                 | 72            | 72              |
| <b>Banqueting - Cocktail</b>              |                |       |        |        |            |           |         |          |         |           |         |                         |                     |                     |               |                 |
| Pateo                                     | 275            | 2960  |        |        | 20,63      | 68        | 13,34   | 44       |         |           |         |                         |                     | 280                 |               |                 |
| Sunset Terrace                            | 650            | 6997  |        |        | 43,93      | 144       | 14,81   | 49       |         |           |         |                         |                     | 600                 |               |                 |
| Wine Cellar Main Room                     | 23             | 251   |        |        | 8,2        | 27        | 2,84    | 9        |         |           |         |                         |                     | 15                  |               | 10              |
| Wine Cellar Small Room                    | 12             | 127   |        |        | 4,2        | 14        | 2,82    | 9        |         |           |         |                         |                     | 5                   |               | 4               |
| <b>Total banqueting and meeting space</b> | <b>2150</b>    |       |        |        |            |           |         |          |         |           |         |                         |                     |                     |               |                 |
| <b>Restaurants</b>                        |                |       |        |        |            |           |         |          |         |           |         |                         |                     |                     |               |                 |
| Manjapão                                  | 372            | 4004  | 3,15   | 10,332 | 30,53      | 100       | 12,18   | 40       |         |           |         |                         |                     | 180                 |               | 180             |
| Grande Escolha                            | 95             | 1023  | 3,15   | 10,332 | 12,34      | 40        | 7,71    | 25       |         |           |         |                         |                     | 72                  |               | 72              |
| Garden Terrace                            | 107            | 1152  | 2,56   | 8,3968 | 14,35      | 47        | 7,46    | 24       |         |           |         |                         |                     | 50                  |               | 50              |

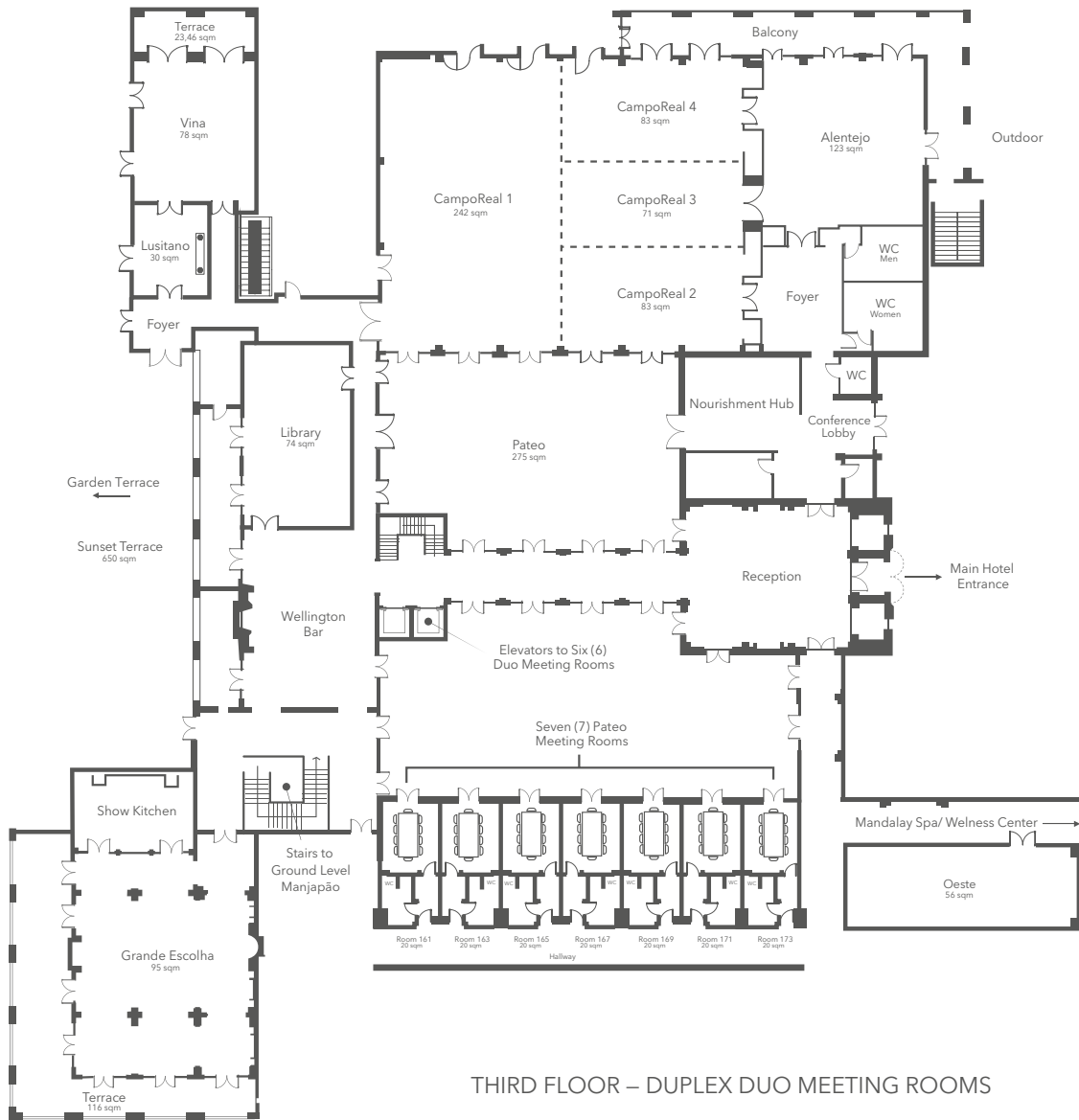
Capacity measures with ergonomic seating. For theater style and banqueting seating, banqueting chairs are used.



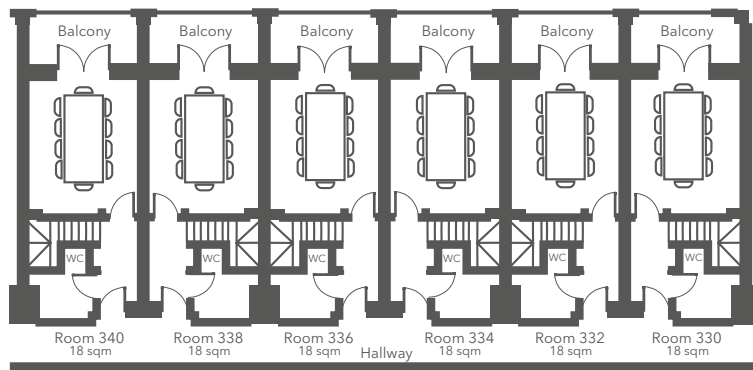


**Floor Plans**

**FIRST FLOOR**



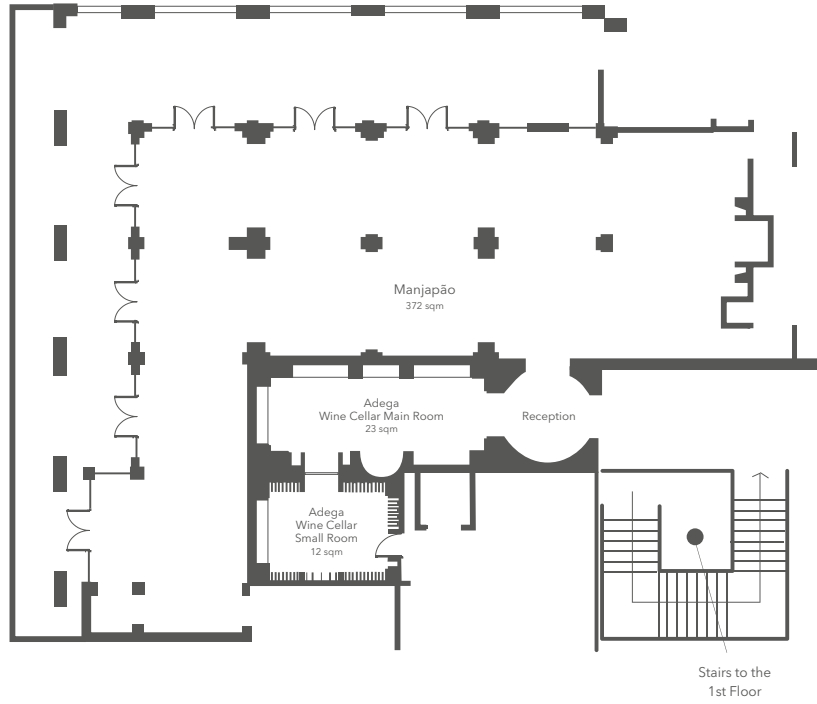
**THIRD FLOOR – DUPLEX DUO MEETING ROOMS**





## Floor Plans

### GROUND FLOOR



### Map of the area

