

OCEANFRONT CONFERENCE CENTER

FLOOR PLANS & WORKBOOK



GRAND MEETINGS AND EVENTS

Wyndham Grand Rio Mar Puerto Rico Golf & Beach Resort, welcomes groups to a destination designed to ensure the perfect event. A spectacular layout combines world-class recreation and exceptional meeting facilities. Guest rooms, leisure areas and meeting rooms are all in convenient proximity to each other, but uniquely private.

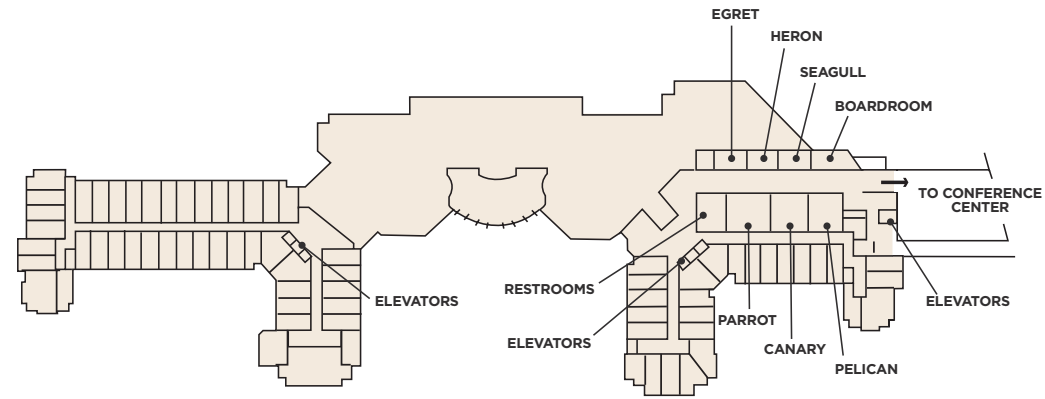
MEETING FACILITIES

- Over 48,000 total square feet of indoor meeting space
- 24 separate meeting rooms with capacity up to 2,300
- Rio Mar Ballroom - 20,913 square feet of unobstructed space
- Spacious pre-function areas
- Numerous breathtaking outdoor venue options
- Over 100,000 total square feet of flexible indoor and outdoor event space
- Highly flexible space layout
- Drive-in access to ballroom
- Direct access to banquet kitchen
- Abundant power outlets in floors, walls and ceilings; strategic ceiling hang points
- Comprehensive A/V equipment and service on-site
- Wireless high-speed internet access throughout Conference Center
- Professional conference services and catering staff

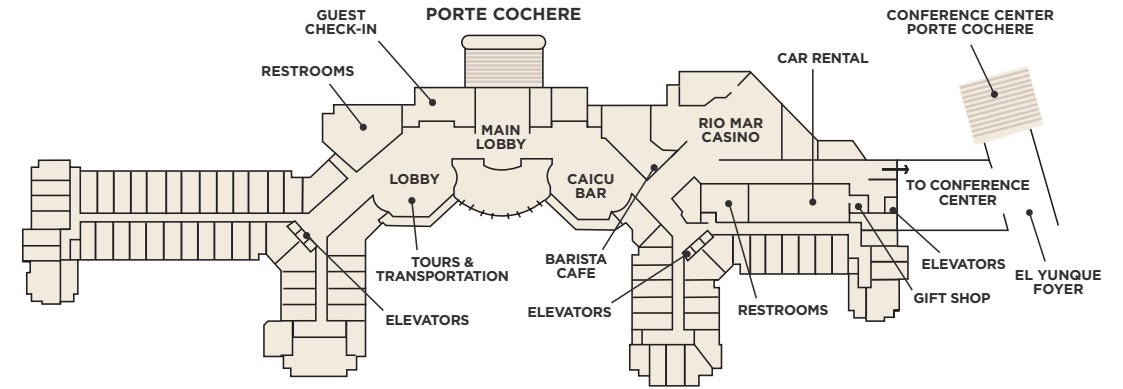
WYNDHAM GRAND RIO MAR PUERTO RICO GOLF & BEACH RESORT

AERIAL VIEW

LEVEL 2

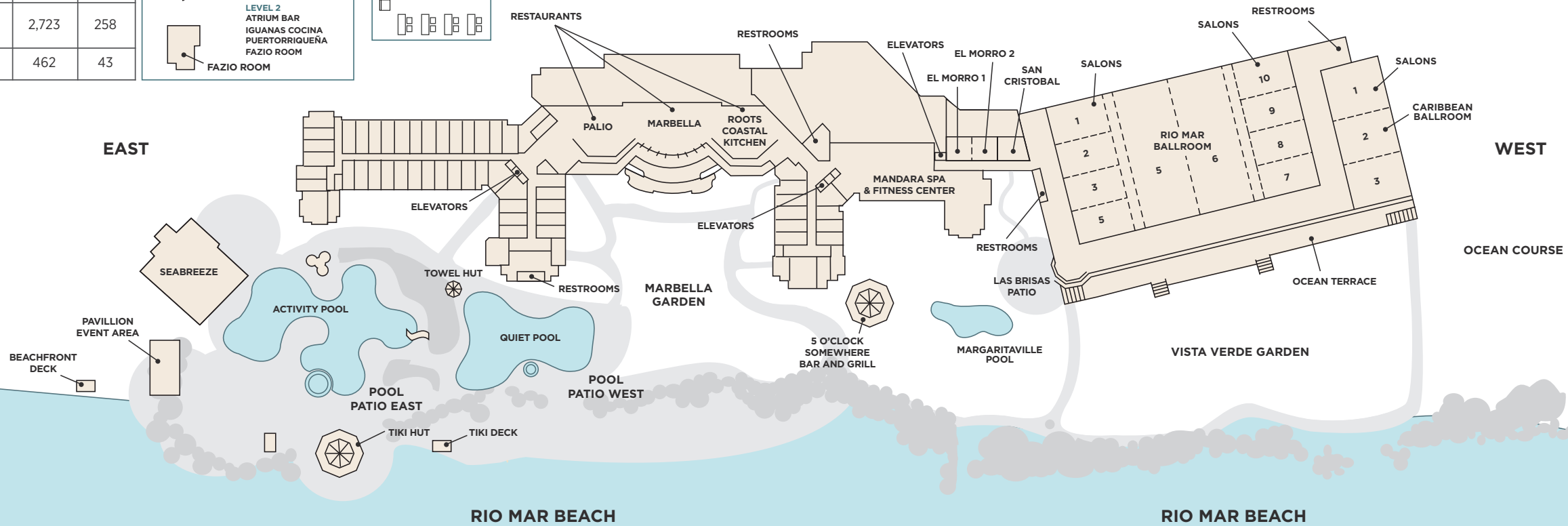
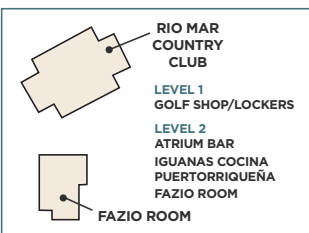


LEVEL 3



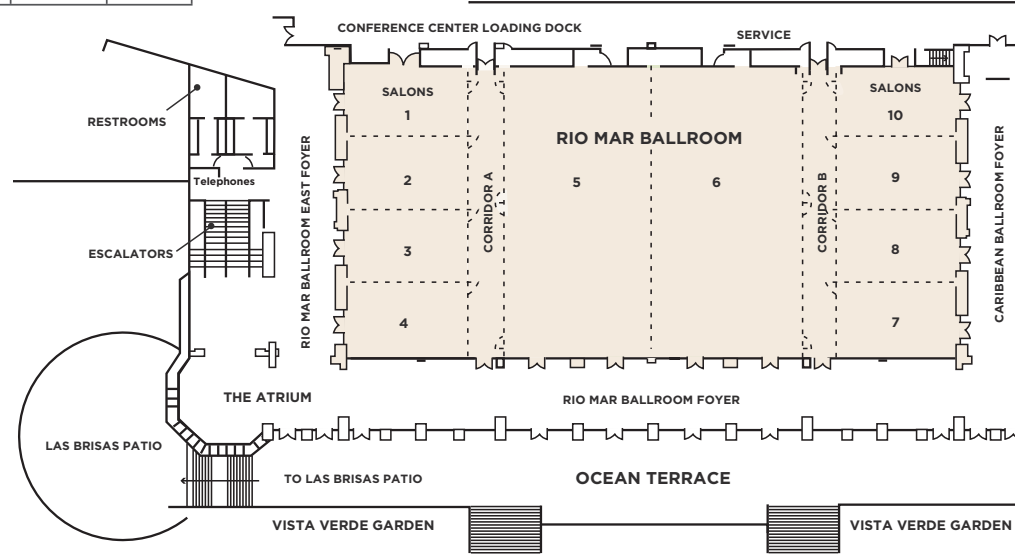
LEVEL 1

ROOM	AREA: sq. ft.	AREA: m ²
Atrium Bar	1,343	125
Iguanas Cocina Puertorriquena	2,723	258
Fazio Room	462	43



ROOM	AREA: sq. ft.	AREA: m ²
Rio Mar Foyer	8,089	751
Atrium	960	89
El Yunque Landing	1,476	137
El Yunque Foyer	3,206	298

RIO MAR BALLROOM

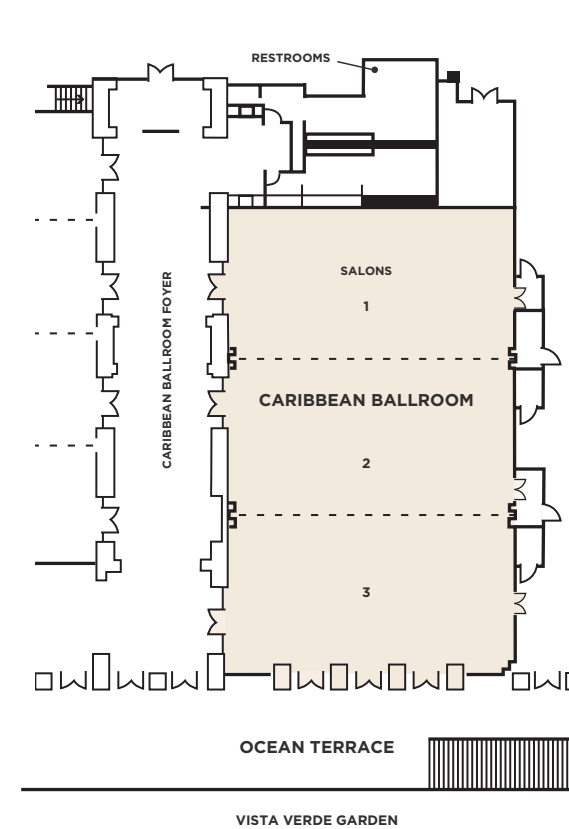


EVENT DATE/TIME	ROOM	ACTUAL sq. ft.	ACTUAL m ²	LENGTH	WIDTH	CEILING HEIGHT	LOWEST POINT	THEATRE	SCHOOL ROOM	CONFERENCE	U-SHAPE	BANQUET 72" ROUND (SEATS 10)
	Rio Mar Salon	20,913	1,943	100' 1"	210'	21' 11"	16' 10"	3,302	1,710	278	181	1,760
	Salon 1	951	88	40' 9"	22' 11"	21' 11"	16' 10"	125	66	50	42	60
	Salon 2	1,062	99	40' 9"	26' 2"	21' 11"	16' 10"	165	72	52	43	70
	Salon 3	1,062	98	40' 9"	26' 2"	21' 11"	16' 10"	165	72	52	43	70
	Salon 4	922	86	40' 9"	23'	21' 11"	16' 10"	138	72	46	40	60
	Corridor A	1,139	106	100' 2"	11' 4"	21' 11"	18' 1"	n/a	n/a	n/a	n/a	n/a
	Salon 5	5,269	490	100' 2"	52' 10"	21' 11"	18' 1"	677	342	126	108	380
	Salon 6	5,147	478	100' 3"	51' 7"	21' 11"	18' 1"	650	285	124	105	380
	Corridor B	1,139	106	100' 2"	11' 3"	21' 11"	18' 1"	n/a	n/a	n/a	n/a	n/a
	Salon 7	926	86	40' 6"	23' 3"	21' 11"	16' 10"	138	72	44	38	60
	Salon 8	1,051	98	40' 7"	26' 1"	21' 11"	16' 10"	165	72	50	41	70
	Salon 9	1,050	97	40' 7"	26' 0"	21' 11"	16' 10"	165	72	50	41	70
	Salon 10	954	89	40' 9"	23' 11"	21' 11"	16' 10"	131	66	48	40	60
	Salon 1-4	4,039	375	100' 1"	40' 9"	21' 11"	16' 10"	455	228	112	99	260
	Salon 7-10	4,022	373	100' 3"	40' 6"	21' 11"	16' 10"	442	228	112	99	260
	Salon 5 & 6	10,450	971	100' 2"	104' 9"	21' 11"	18' 1"	1,560	798	176	131	830
	Salon 1-5 + Corr. A	10,513	977	105' 7"	100' 1"	21' 11"	16' 10"	1,568	819	176	134	850
	Salon 6-10 + Corr. B	10,366	963	104' 1"	100' 3"	21' 11"	16' 10"	1,568	819	174	132	850

Capacities verified by the Professional Convention Management Association. Capacity will vary based on requested room set-up.

CARIBBEAN BALLROOM

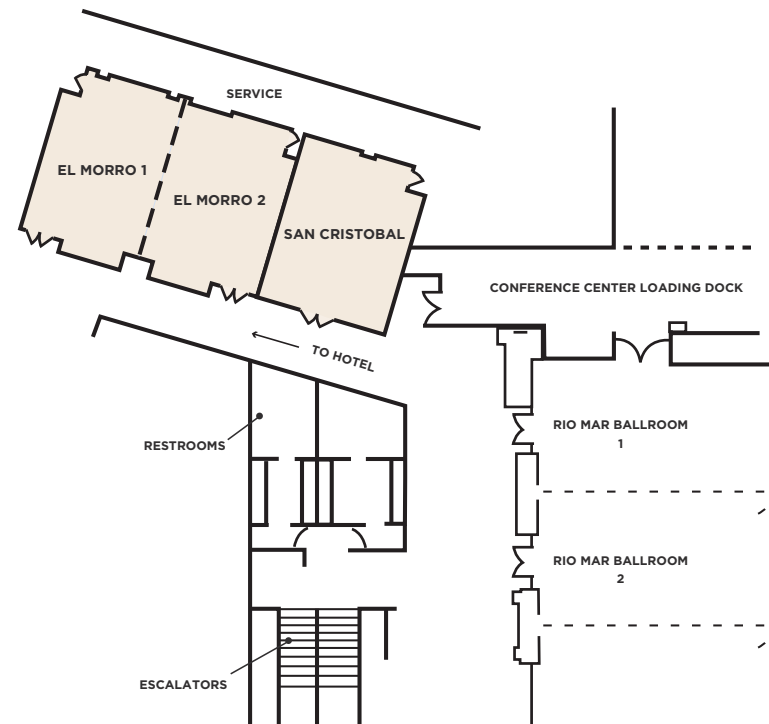
ROOM	AREA: sq. ft.	AREA: m ²
Caribbean Foyer	1,995	185



EVENT DATE/TIME	ROOM	ACTUAL sq. ft.	ACTUAL m ²	LENGTH	WIDTH	CEILING HEIGHT	LOWEST POINT	THEATRE	SCHOOL ROOM	CONFERENCE	U-SHAPE	BANQUET 72" ROUND (SEATS 10)
	Caribbean Ballroom	6,485	602	100' 2"	63' 11"	16' 1"	4' 3.5"	881	441	134	110	480
	Salon 1	2,097	195	31' 10"	22' 11"	16' 1"	4' 3.5"	215	99	80	68	140
	Salon 2	2,184	203	34' 4"	26' 2"	16' 1"	4' 3.5"	236	99	82	69	140
	Salon 3	2,203	205	34' 11"	26' 2"	16' 1"	4' 3.5"	229	99	82	69	140
	Salon 1 & 2	4,281	398	63' 9"	23'	16' 1"	4' 3.5"	522	288	102	78	270
	Salon 2 & 3	4,387	407	63' 9"	11' 4"	16' 1"	4' 3.5"	535	295	104	80	280

Capacities verified by the Professional Convention Management Association. Capacity will vary based on requested room set-up.

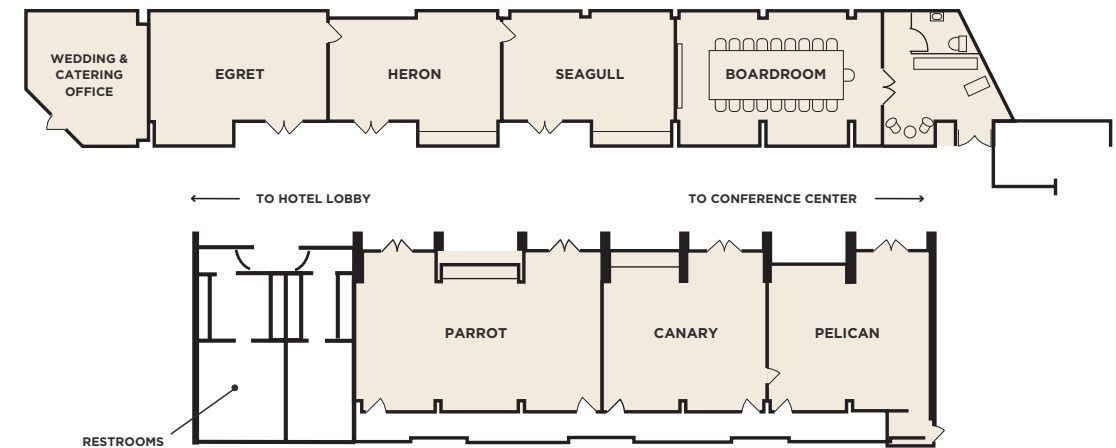
FIRST FLOOR MEETING ROOMS



EVENT DATE/TIME	ROOM	ACTUAL sq. ft.	ACTUAL m ²	LENGTH	WIDTH	CEILING HEIGHT	LOWEST POINT	THEATRE	SCHOOL ROOM	CONFERENCE	U-SHAPE	BANQUET 72" ROUND (SEATS 10)
	El Morro	1,368	127	49' 5"	29' 8"	9' 4.6"	7' 10.4"	120	60	45	45	80
	El Morro 1	670	62	29' 8"	24' 3"	9' 4.6"	7' 10.4"	100	39	26	26	40
	El Morro 2	689	64	29' 7"	24' 11"	9' 4.6"	7' 10.4"	100	39	26	26	40
	San Cristobal	627	58	30' 8"	21' 2"	9' 1.6"	8' 1"	93	45	29	29	40

Capacities verified by the Professional Convention Management Association. Capacity will vary based on requested room set-up.

MEZZANINE MEETING ROOMS



EVENT DATE/TIME	ROOM	ACTUAL sq. ft.	ACTUAL m ²	LENGTH	WIDTH	CEILING HEIGHT	LOWEST POINT	THEATRE	SCHOOL ROOM	CONFERENCE	U-SHAPE	BANQUET 72" ROUND (SEATS 10)
	Egret	485	45	26' 10"	20' 2"	7' 7.6"		55	21	26	22	20
	Heron	489	45	27' 7"	16' 6"	8' 9.7"		59	21	26	22	20
	Seagull	514	48	26' 11"	17' 7"	9' 2.6"	8' 10"	59	21	26	22	20
	Board Room	668	62	32' 4"	21' 2"	9'	8' 10"	n/a	n/a	22	n/a	n/a
	Parrot	1,024	95	41' 5"	26' 8"	9' 2"	8' 11"	118	60	46	40	60
	Canary	681	63	26' 9"	26' 8"	9' 4"	8' 10.6"	82	39	32	26	30
	Pelican	680	63	26' 9"	26' 8"	9' 2"	8' 11"	85	36	32	26	30

Capacities verified by the Professional Convention Management Association. Capacity will vary based on requested room set-up.

OUTDOOR FUNCTION AREAS

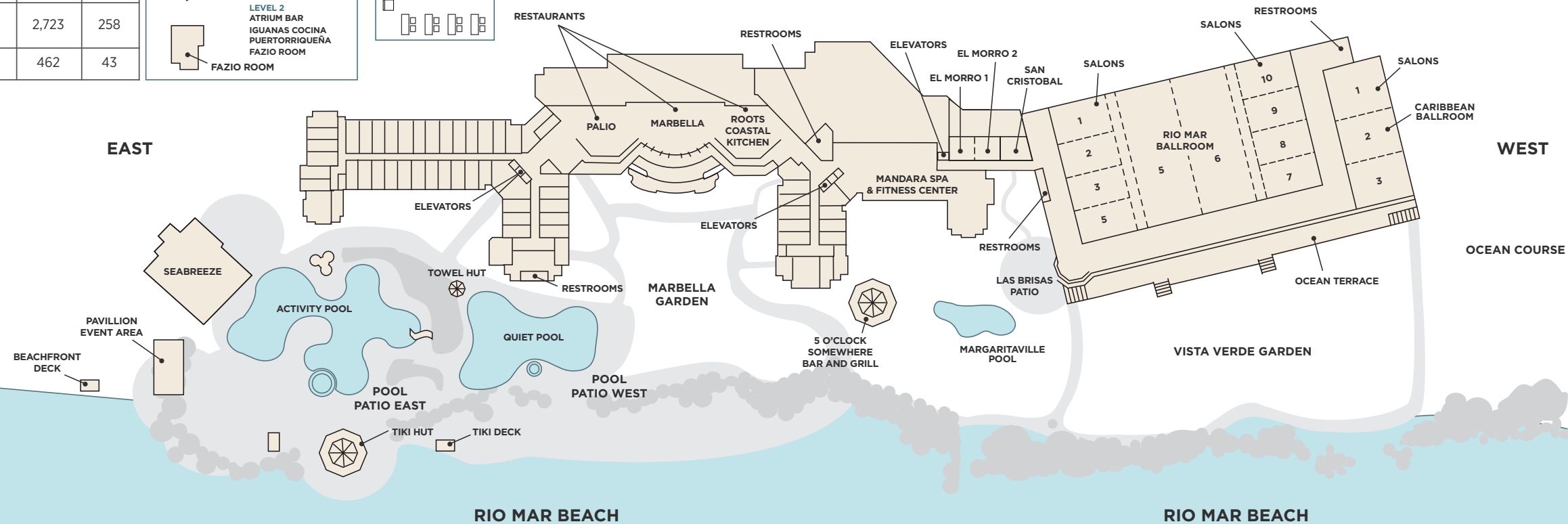
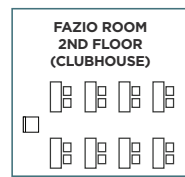
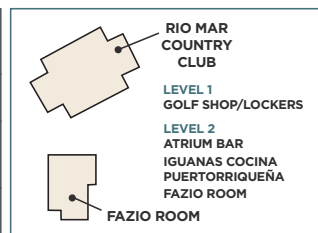
Wyndham Grand Rio Mar Puerto Rico Golf & Beach Resort offers acres of lush, open spaces for unique daytime or evening events. Stunning architecture highlights a layout carefully planned for maximum functionality and inconvenience. Our exceptional Banquet & Catering Team will plan your event. A variety of exciting themes are available for outdoor receptions, cocktail parties and dinners.

OUTDOOR FUNCTION AREAS

EVENT DATE/TIME	FUNCTION AREA	AREA: sq. ft.	AREA: m ²	BANQUET 72" ROUND (SEATS 10)
	Ocean Terrace	8,692	807	520
	Vista Verde Garden	30,826	2,864	1,300
	Las Brisas Patio	1,126	105	70
	Marbella Garden	15,390	1,430	400
	Pool Patio East	3,446	320	300
	Pool Patio West	6,063.5	563	700
	Beachfront Deck	2,850	264	100
	Pavillion	2,864	266	180
	Tiki Deck	1,080	100	50
	Seabreeze	4,800	446	280

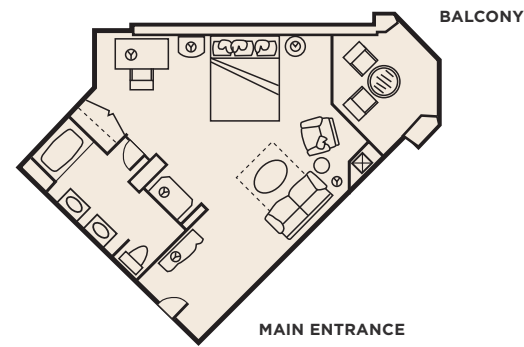
LEVEL 1

ROOM	AREA: sq. ft.	AREA: m ²
Atrium Bar	1,343	125
Iguanas Cocina Puertorriquena	2,723	258
Fazio Room	462	43



SUITES

JUNIOR SUITE



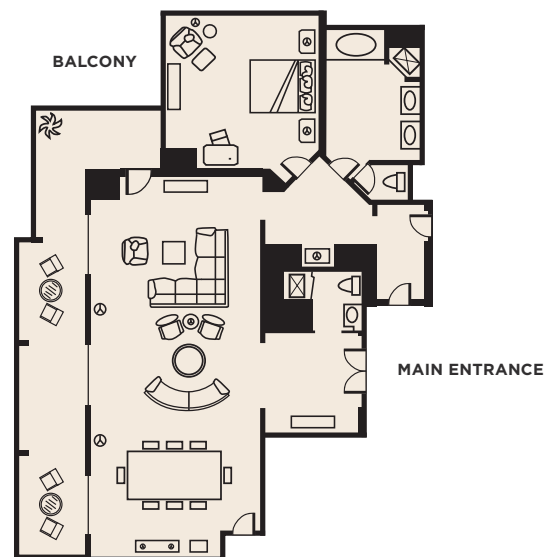
24 Suites
605 Square Feet/56 Square Meters

FAMILY SUITE



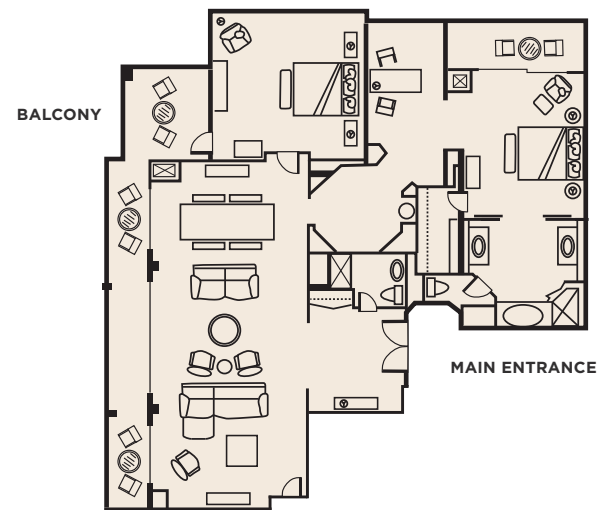
8 Suites
1,222 Square Feet/113.52 Square Meters

ATLANTIC SUITE



6 Suites
1,701 Square Feet/158 Square Meters
1 Bedroom/Connecting room available
for an extra bedroom

GOVERNORS SUITE



1 Suite
2,662 Square Feet/ 247.31 Square Meters
2 Bedrooms/Connecting room available
for an extra bedroom

PUERTO RICO – THE ISLAND OF ENCHANTMENT

Puerto Rico, a U.S. Commonwealth, provides easy access and modern technology so it's business as usual in paradise.

- No passport, customs or currency exchange required for U.S. citizens.
- Direct-flight access is a breeze from the U.S. and parts of Europe and Latin America.
- 23 major cities in the continental U.S. offer non-stop service to Puerto Rico.
- Flying to Puerto Rico only takes:
 - 3-1/4 hours from Atlanta
 - 3-3/4 hours from New York
 - 4-1/2 hours from Chicago
 - 2-1/2 hours from Miami
 - 5 hours from Dallas
 - 8 hours from Spain
- The San Juan Seaport is the fourth largest port in the Western Hemisphere.
- High-capacity undersea fiber optic cables and an extensive satellite network link communication from Puerto Rico to the U.S., Europe, South America and the Caribbean.
- Promotional materials shipped to Puerto Rico for meetings, conventions and trade shows are exempt from the local excise tax when planners follow a simple procedure through the Puerto Rico Convention Bureau.
- Wyndham Grand Rio Mar Puerto Rico Golf Beach & Resort features its own in-house transportation department. DMCs provide modern transportation alternatives to meeting attendees.
- Spanish and English are both official languages of Puerto Rico.

**WYNDHAM GRAND RIO MAR PUERTO RICO
GOLF & BEACH RESORT**

6000 Rio Mar Boulevard Rio Grande, Puerto Rico 00745-6100
Toll-Free: 800.474.6627 Direct: 787.888.6000 Fax: 787.888.6235
meetings-riomar@wyndham.com
WYNDHAMGRANDRIOMAR.COM



@WyndhamGrandRM