



WYNDHAM GRAND[®]

Orlando Resort Bonnet Creek

DESCRIPTION

The **Wyndham Grand Orlando Bonnet Creek** is a one-of-a-kind experience with the compelling local flavor of Orlando. Here you will find dedicated service, relaxing surroundings and thoughtful touches you expect from Wyndham — on a grand scale. Guest rooms are comfortable and refined... dining experiences are crafted by expert chefs... and artfully appointed lounges and public areas invite you to linger.

There are over 400 elegantly appointed guestrooms and suites, with over 32,000 square feet of meeting and function space. The Blue Harmony Spa and the adjacent Rees Jones-designed championship golf course are the signature amenities. A zero-entry themed pool, outdoor spas, cabanas and surrounding recreational areas will enhance your outdoor experience. The culinary delights of three signature restaurants, two lounges and coffee bar will fill your diverse dining tastes.

LOCATION

Located just minutes from each of the Walt Disney World[®] Resort parks and only a few miles from Universal Studios, SeaWorld and all the other attractions Orlando has to offer, the hotel is nestled on woodlands and part of the Bonnet Creek area. It is surrounded on each side by the Walt Disney World[®] Resort and is just off Epcot Drive, making easy access to Interstate 4 and the Osceola Parkway.

- Orlando International Airport: 20 Minutes
- Kissimmee Gateway Airport: 5 Minutes
- Tampa International Airport: 70 Minutes

GUEST ROOMS

King Bedded Rooms:	98
Double Bedded Rooms:	206
King Bunk Family Room:	42
Double Bunk Family Room:	42
Parlor Suites:	10
Junior Presidential Suite:	1
Presidential Suite:	1

TOTAL: 400

WEDDINGS

Our skilled on-site wedding planners will help to plan the perfect Orlando destination wedding, with exquisite indoor and outdoor venues available, complimented by catering and culinary experts.



MEETING SPACE

Wyndham Grand Orlando Bonnet Creek offers over 32,000 square feet of flexible meeting and function space. The Grand Ponce de Leon Ballroom is located on the ground floor with tasteful décor and pre-function space to host over 400 guests. Outdoor areas and special event sites along the pool deck and throughout the grounds make that special event unique and memorable.

Meeting and function space:

Room Name	Square Feet
Ponce de Leon Ballroom	7,950 (Divides into seven sections)
Bonnet Creek Ballroom	3,500 (Divides into two sections)
Expedition	2,432
Journey Ballroom	2,419 (Divides into two sections)
Breakout Rooms (5)	705 – 1,010
Boardrooms (3)	1,400
Parlor Suites (10)	440
Pre-function	5,300
Outdoor Patio	1,200

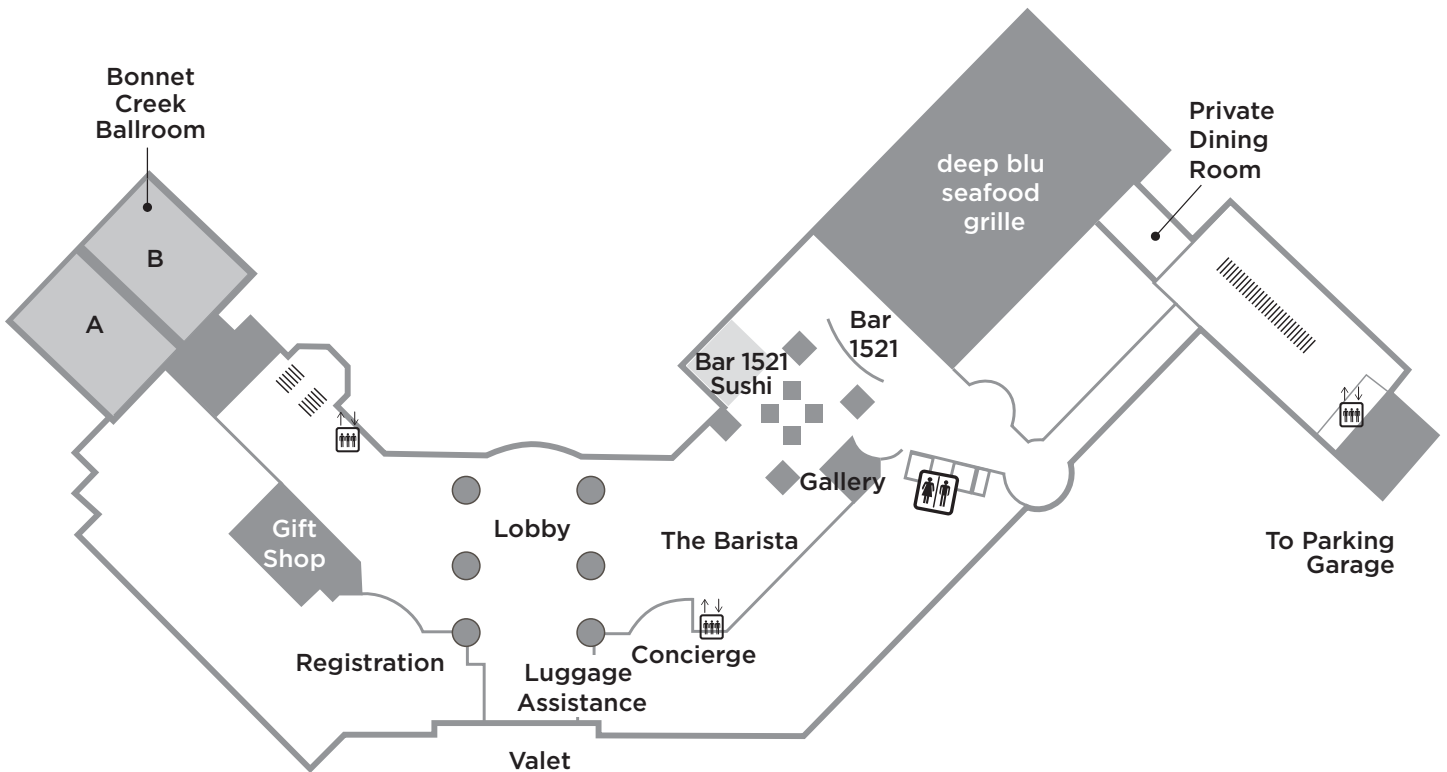
A state-of-the-art business center with computer access, printing and copy service is available on the ground level. Wireless internet access is available in guestrooms and throughout.

GOLF

The Reese Jones-designed championship golf course was designed by Rees Jones and measures 7,108 yards with a slope of 139 and a rating of 74.6. This Central Florida premiere golf course staff schedules PGA certified instruction, golf pro shop, tournaments and choice reserved tee times exclusive to Wyndham Grand Orlando guests.

LOBBY LEVEL

Lobby Level	Square Feet	Dimensions	Banquet Rounds of 10	Reception	Classroom	Theatre	Conference	Hollow Square	U-Shape
deep blu seafood grille	6124	varies	152	350	n/a	n/a	n/a	n/a	n/a
Private Dining Area	540	24' x 25'	22	50	n/a	n/a	11	10	10
Bar 1521	4330	varies	n/a	300	n/a	n/a	n/a	n/a	n/a
Bonnet Creek Ballroom Foyer	585	15 x 39	n/a	70	n/a	n/a	n/a	n/a	n/a
Bonnet Creek Ballroom	3500	68.3 x 51.2 x 18	250	330	135	360	75	65	78
Bonnet Creek Ballroom A	1550	30.3 x 51.2 x 18	110	145	60	160	35	30	38
Bonnet Creek Ballroom B	1950	38.1 x 51.2 x 18	140	185	75	200	40	35	40
Bonnet Creek Terrace	923	88.75 x 10.4	n/a	100	n/a	n/a	n/a	n/a	n/a



Please know this is just an estimate of the room capacities. Once all is final, these dimensions may go up or down, based on doorways/walls/etc.

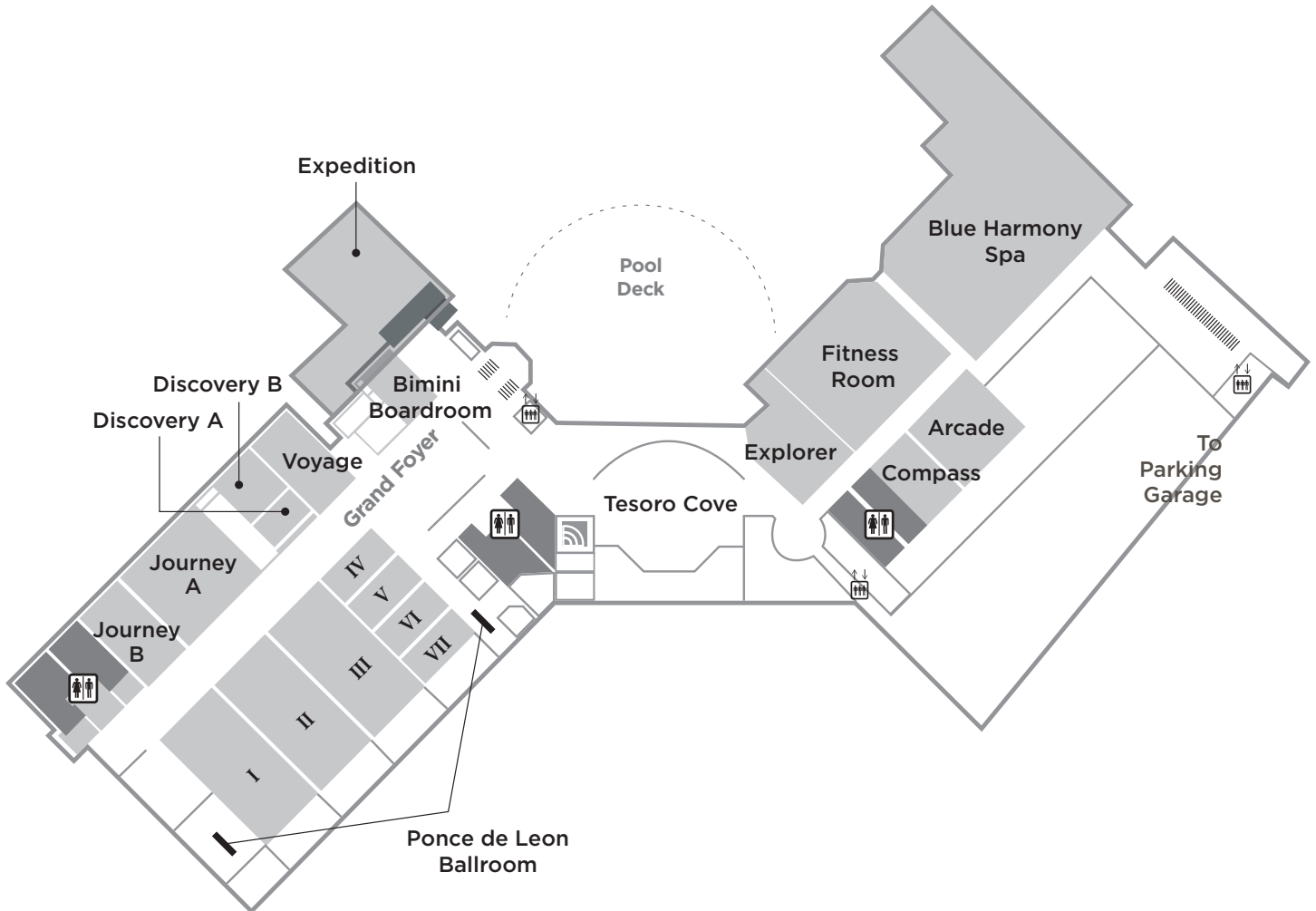
LOWER LEVEL

Ground Level	Square Feet	Dimensions	Banquet Rounds of 10	Reception	Classroom	Theatre	Conference	Hollow Square	U-Shape
Ponce de Leon Ballroom	7950	122' x 62'	450	600	340	670			
Ponce de Leon I	1910	31' x 62'	100	150	100	200	55	50	45
Ponce de Leon II	1910	31' x 62'	100	150	100	200	55	50	45
Ponce de Leon III	1910	31' x 62'	100	150	100	200	55	50	45
Ponce de Leon V	420	15' x 28'	20	40	20	35	14	12	12
Ponce de Leon VI	436	16' x 28'	20	40	20	35	14	12	12
Ponce de Leon VII	436	16' x 28'	20	40	20	35	14	12	12
Ponce de Leon IV	420	15 x 28	20	40	20	35	14	12	12
Ponce de Leon Foyer	2250	125' x 18'	n/a	250	n/a	n/a	n/a	n/a	n/a
Ponce de Leon Foyer I	550	31' x 18'	n/a	60	n/a	n/a	n/a	n/a	n/a
Ponce de Leon Foyer II	550	31' x 18'	n/a	60	n/a	n/a	n/a	n/a	n/a
Ponce de Leon Foyer III	550	31' x 18'	n/a	60	n/a	n/a	n/a	n/a	n/a
Ponce de Leon Foyer IV	550	31' x 18'	n/a	60	n/a	n/a	n/a	n/a	n/a
Ponce de Leon Registration Desk	156	20' x 8'	n/a	n/a	n/a	n/a	5	n/a	n/a
Grand Foyer	3260	83' x 42'	n/a	100	n/a	n/a	n/a	n/a	n/a
Grand Registration Desk	450	20' x 25'	n/a	n/a	n/a	n/a	n/a	n/a	n/a
Journey Ballroom	2419	38' x 63'	160	200	90	210	58	60	60
Journey A	1560	38' x 41'	100	130	60	140	35	40	40
Journey B	800	35' x 22'	50	70	30	60	20	20	20
Discovery	716	39' x 18'	30	60	30	60	18	18	18
Discovery A	300	18' x 17'	10	20	12	18	6	n/a	n/a
Discovery B	428	18' x 22'	20	40	18	35	12	12	12
Voyage	820	22' x 36'	50	80	40	80	24	24	24
Ceiling Height on all above	19' max ceiling height								
Bimini Boardroom	480	26' x 17'	n/a	n/a	n/a	n/a	12	n/a	n/a
Bimini Foyer	642	varies	30	70	n/a	n/a	n/a	n/a	n/a
Compass	487						15		
Tesoro Cove	4600	54' x 72'	135	300	n/a	n/a	n/a	n/a	n/a
Explorer	745	25' x 28'	50	75	40	80	20	22	20
Expedition	2155	56.4 x 38.2 x 12.4	160	210	90	220	45	48	55
Expedition Terrace	277	14.4 x 19.2	n/a	35	n/a	n/a	n/a	n/a	n/a

*These are max numbers that do not contain any AV or staging

Please know this is just an estimate of the room capacities. Once all is final, these dimensions may go up or down, based on doorways/walls/etc.

LOWER LEVEL

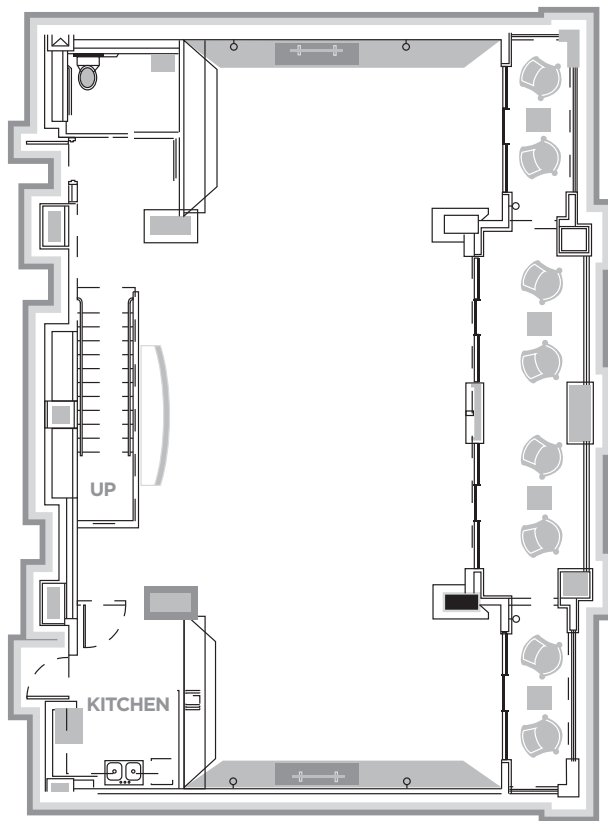


Please know this is just an estimate of the room capacities. Once all is final, these dimensions may go up or down, based on doorways/walls/etc.

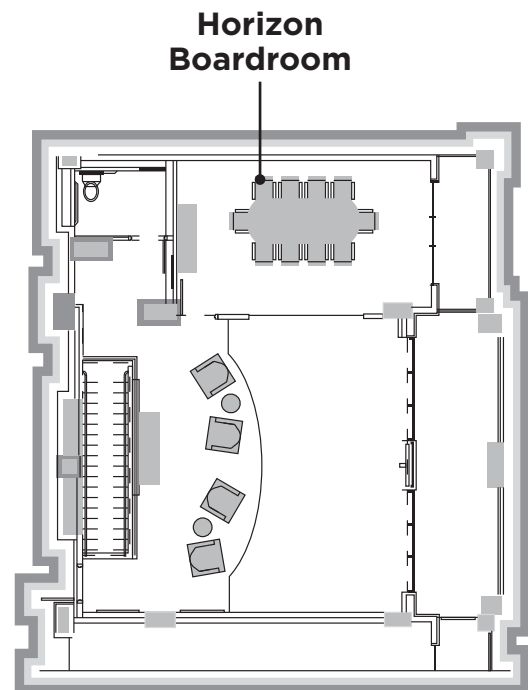
HORIZON LEVELS

WYNDHAM GRAND
Orlando Resort Bonnet Creek

Executive Level	Square Feet	Dimensions	Banquet Rounds of 10	Reception	Classroom	Theatre	Conference	Hollow Square	U-Shape
Horizon Boardroom	304	14' x 22'	n/a	n/a	n/a	n/a	10	n/a	n/a
Executive Lounge	1600	29' x 54'	50	80	50	100	20	n/a	n/a
Parlor Rooms (10 Units) (12th and 14th Floor- all furn. removed)	407	31' x 13'	20	35	14	30	14	12	12



12th Floor



14th Floor

Please know this is just an estimate of the room capacities. Once all is final, these dimensions may go up or down, based on doorways/walls/etc.

POOL DECK

