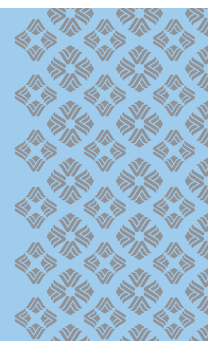




WYNDHAM®

Riverfront Little Rock



LOCATION

Located on the bank of the Arkansas River, just blocks from Verizon arena and Downtown Little Rock, the Wyndham Riverfront Hotel offers 220 luxurious guest rooms. The hotel is next door to Dickey Stephens Ballpark, and within walking distance to both Historic Argenta and the Rivermarket Entertainment Districts.

FEATURES

- 220 Beautifully Appointed Guestrooms
- 13 Suites
- Accessible Rooms
- Riverfront Steakhouse
- Benihana Japanese Steakhouse
- Two Lounges
- Room Service
- Meeting Rooms Available
- Free On-Site Parking
- Complimentary Airport Shuttle
- Outdoor Pool
- Fitness Center
- Business Center
- Complimentary Weekday Paper Available at the Front Desk
- Same Day Dry Cleaning Service

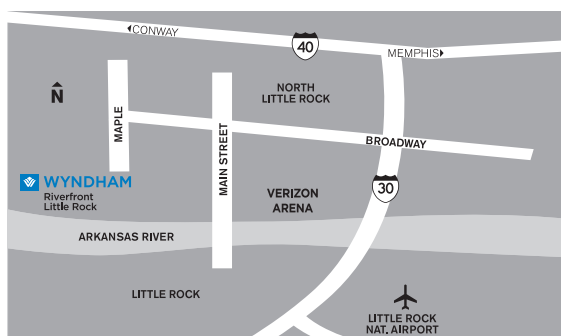
ROOM DETAILS

- High-Speed Wireless Internet
- 32" Flat Screen TV
- In-Room Refrigerators
- Coffeemaker
- Iron & Ironing Board
- Hair Dryer
- All Rooms Non-Smoking
- In-Room Safe
- Two-Line Telephones (Speaker Phones) With Voicemail

DINING AND ENTERTAINMENT

- Riverfront Restaurant
- Benihana Japanese Restaurant
- Two Lounges
- Room Service Available
- Verizon Arena
- River Market Entertainment District
- Farmer's Market
- Dickey Stephens Ballpark

GETTING THERE



From Little Rock National Airport (LIT):

Distance: 8 miles. Exit airport following signs to 440W; continue on 440W to I-30 East. Exit 141B (Broadway); turn left on Broadway. Proceed through 4 traffic lights and turn left on Maple. Hotel will be on the right.



ATTRACTIONS

- Clinton Presidential Library
- Arkansas Inland Maritime Museum
- Museum of Discovery
- Little Rock Zoo
- Heifer International
- Burns Park
- Riverfront Park
- Wild River Country
- McCain Mall
- River Rail Trolley
- Argenta Historic District

MEETING SPACE HIGHLIGHTS

- 14,000 Total Sq. Feet of Meeting Space
- 2 Large Ballrooms Divisible in Three and Four Sections
- 5 Breakout Rooms
- 2 Hospitality Suites
- Complete Banquet and Catering Services Available
- State-of-the-Art Audiovisual On-Site Equipment Available
- Both Wired and Wireless High Speed Internet Access

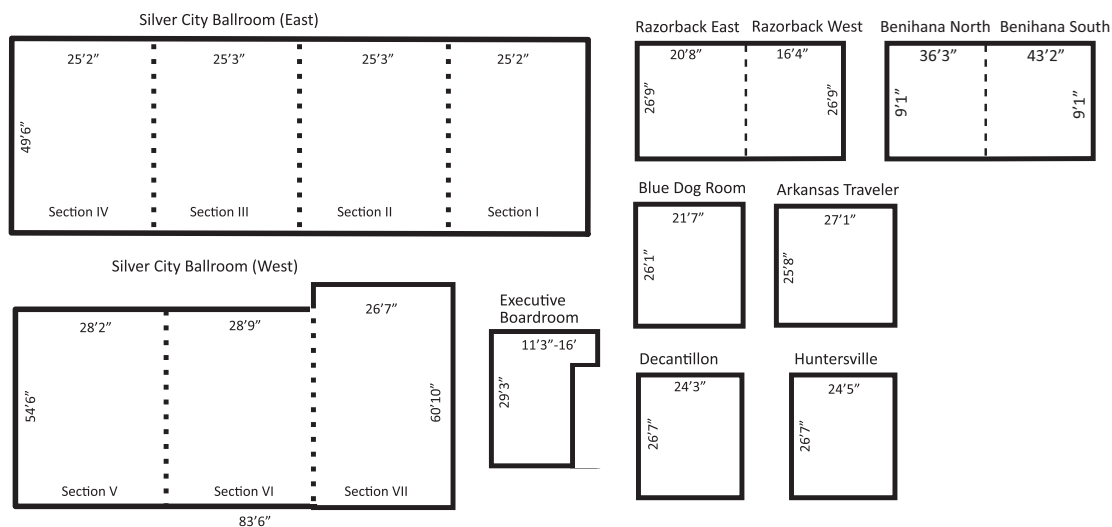
MEETING SPACE CAPACITY CHART

Name Of Room	Room Size	Square Feet	Banquet 10	Theater	Classroom	Reception	Hollow Square or Conference	U-shape
Silver City Ballroom (East)	101'58" x 49'6"	5028	400	700	336	720	-	-
Section I	25'2" x 49'6"	1247	90	175	84	180	40	30
Section II	25'3" x 49'6"	1249	90	175	84	180	40	30
Section III	25'3" x 49'6"	1249	90	175	84	180	40	30
Section IV	24'11" x 49'6"	1233	90	175	84	180	40	30
Silver City Ballroom (West)	83'6" x 54'6"	4550	325	580	300	680	-	-
Section V	28'2" x 54'6"	1535	90	190	85	220	40	40
Section VI	28'9" x 54'6"	1535	90	190	85	220	40	40
Section VII	28'9" x 54'6"	1535	100	190	85	220	40	40
Razorback	37' x 26'9"	990	96	70	50	100	40	30
Razorback East	20'8" x 26'9"	553	48	30	25	40	18	18
Razorback West	16'4" x 26'9"	437	40	30	24	40	18	18
Blue Dog Room	21'7" x 26'1"	563	30	-	-	-	-	-
Executive Boardroom	11'3" x 29'3"	329	15	-	-	20	15	-
Arkansas Traveler	27'1" x 25'8"	695	40	70	40	40	30	24
DeCantillon - Hospitality	24'3" x 26'7"	644	-	-	-	30	-	-
Huntersville - Hospitality	24'5" x 26'7"	649	-	-	-	30	-	-
Benihana VIP Room	79'5" x 19'1"							
Benihana VIP North	36'3" x 9'1"							
Benihana VIP South	43'2" x 9'1"							

Please note our ceiling heights are 12ft.

* Our meeting room capacities have been calculated using the Meeting Professional International Comfort Calculator.

FLOOR PLAN CHART



WYNDHAM®

**Riverfront
Little Rock**

2 Riverfront Place, North Little Rock, Arkansas 72114

Phone: 501-371-9000 Fax: 501-907-4800

WYNDHAM.COM / 1-800-WYNDHAM

Group Sales: 888-WYNDHAM

All Wyndham® hotels are either franchised by the company or managed by Wyndham Hotel Management, Inc., one of its affiliates or through a joint-venture partner. ©2016 Wyndham Hotels and Resorts, LLC. All rights reserved.

MC-1605