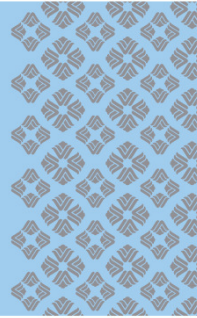




WYNDHAM®

Peachtree Hotel and Conference Center



LOCATION

Success is guaranteed when ideas are given a little room to grow, and there is a world of inspiring space at the Wyndham Peachtree Conference Center. Set 30 minutes outside downtown Atlanta among 19 acres of lush forests, our IACC-approved facility is a landmark destination for any event or occasion.

FEATURES

- Indoor & Outdoor Pools/Whirlpools
- 10,000 Sq. Ft. Executive Fitness Center with Saunas
- Tennis Courts
- Racquetball & Volleyball Courts
- 100 Miles of Biking & Hiking Trails
- Over 100 Holes of Championship Golf
- Frederick J. Brown Amphitheater
- Atlanta Motor Speedway®
- World-Class Shopping & Historic Attractions
- Downtown Atlanta's Entertainment & Nightlife
- Landmark Meetings Destination
- 23 Miles from Hartsfield Jackson International Airport
- 6 Miles from Falcon Field Airport
- 30 Miles from Downtown Atlanta
- Member, International Association of Conference Centers
- First IACC Approved Conference Center in Georgia - Opened in 1984

ROOM DETAILS

All rooms feature the following:

- 250 Guest Rooms & Suites
- Panoramic Forest Views
- Private Deck or Terrace
- Down Comforter & 300 Thread Count Sheets
- Wolfgang Puck® Coffee/Tea Maker
- True Blue® Spa Amenities by Bath & Body Works®
- Work Desk with Lamp
- High Speed Wired/Wireless Internet Access
- Herman Miller Aeron® Ergonomic Work Chair
- AM/FM Clock Radio with MP3 Docking Station
- 42" HD Flat Screen TVs

DINING AND ENTERTAINMENT

- Terrace Restaurant
- Wynner's Sports Bar & Lounge
- Taste of Tuscany Room
- In-Room Dining



MEETING SPACE HIGHLIGHTS

- IACC Certified Conference Center
- Over 30,000 Sq. Ft. of Function Space
- 5,400 Sq. Ft. Grand Ballroom
- 230-Seat Caledonian Amphitheater
- Outdoor Options (2 Courtyards)
- 30 Function Rooms
- Events up to 600 Guests
- Social Events & Weddings
- Dedicated Conference Planner
- Full Service Catering
- Herman Miller Aeron® Chairs in All Function Space
- Complete Meeting Packages

TECHNOLOGY AND SERVICES

- Wireless Internet Access Throughout the Facility
- On-Site Audiovisual
- Business Center/Services
- In-House AV Equipment & Services
- Elegant Catering
- 1,500 Sq. Ft. Business Center with 14 Workstations - Open 24-Hours
- Inventive Meetings Team for Teambuilding & Creative Meetings Available

GETTING THERE

Hartsfield-Jackson Atlanta International Airport (ATL)

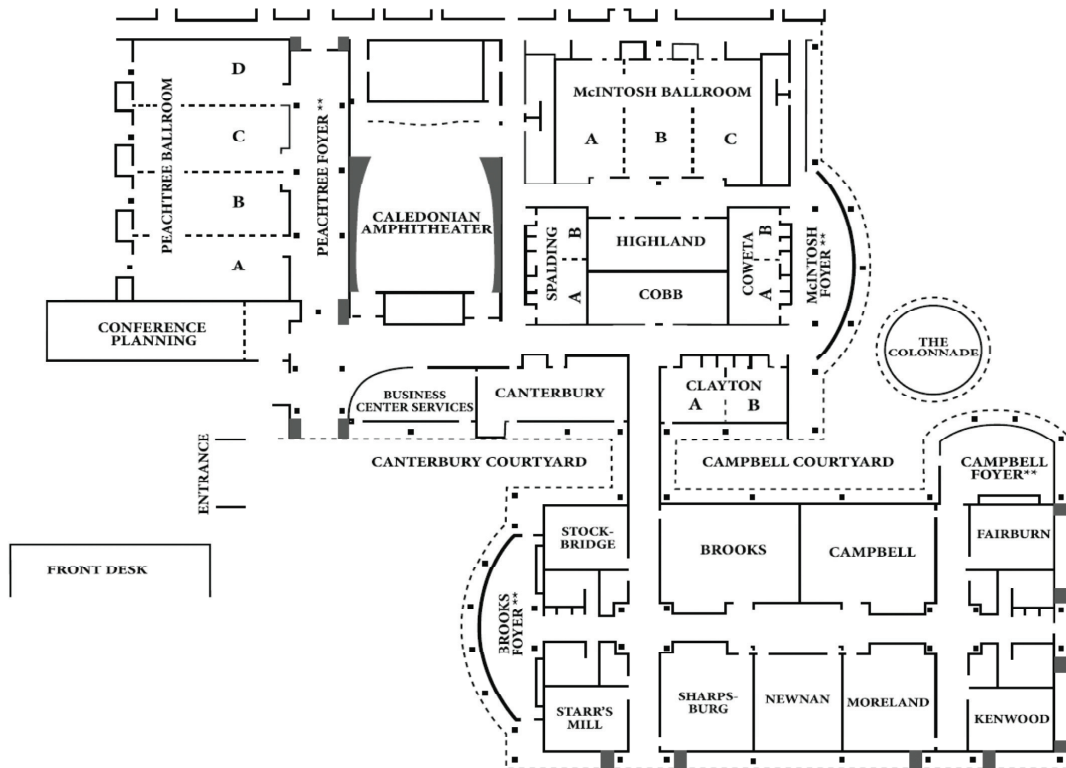
We are conveniently located just 23 miles from Hartsfield-Jackson Atlanta International Airport (ATL), the busiest airport in the world, served by more than 20 passenger airlines. our in-house transportation team will whisk your attendees to and from the airport and around the Peachtree City area in style. We appreciate your consideration of our venue and will work hard to help you achieve your goals.

MEETING SPACE CAPACITY CHART

Name Of Room	Dimensions	Square Feet	Theater	Banquet	Class	U-Shape	Pods	Conference	Hollow Square
Peachtree Ballroom	54' X 100'	5,400	600 / 450	450	400 / 250	N/A	252 / 175	N/A	N/A
Peachtree A, B, C, or D	54' X 25'	1,350	90 / 70	80	63 / 48	32 / 24	54 / 42	26 / 20	40 / 30
McIntosh Ballroom	46' X 70'	3,220	310 / 256	220	165 / 108	70 / 55	153 / 119	N/A	82 / 64
McIntosh A, B or C	46' X 23'	1,058	64 / 48	70	56 / 42	32 / 24	45 / 35	28 / 20	40 / 30
Coweta AB									
Spalding AB	18' X 43'	774	72 / 60	60	56 / 40	32 / 25	45 / 35	32 / 20	36 / 28
Coweta A or B									
Spalding A or B	18' X 21'	378	30 / 25	20 / 16	24 / 18	24 / 18	14 / 10	16 / 10	18 / 12
Highland	20' X 48'	960	66 / 55	60	64 / 56	30 / 23	45 / 35	28 / 20	36 / 28
Cobb	19' X 48'	960	66 / 55	60	64 / 56	30 / 23	45 / 35	28 / 20	36 / 28
Caledonian Amphitheater	N/A	3,000	N/A	N/A	230	N/A	N/A	N/A	N/A
Canterbury	25' X 54'	1,350	80 / 70	80	63 / 50	32 / 24	54 / 42	28 / 20	40 / 30
Clayton AB	22' X 44'	968	80 / 70	60	63 / 50	32 / 25	45 / 35	32 / 22	37 / 28
Clayton A or Clayton B	22' X 22'	484	35 / 30	20	24 / 18	14 / 10	18 / 14	16 / 10	18 / 12
Starr's Mill, Stockbridge, Fairburn or Kenwood	24' X 30'	720	65 / 48	50	43 / 35	24 / 18	36 / 28	26 / 18	32 / 24
Sharpsburg, Moreland & Newnan	37' X 30'	1,110	100 / 80	80	72 / 60	33 / 25	54 / 42	30 / 22	45 / 30
Campbell or Brooks	37' X 48'	1,776	150 / 115	120	112 / 88	44 / 33	72 / 56	35 / 26	58 / 44

The capacity before the slash represents banquet chairs & banquet tables. The capacity after the slash represents chairs and hard writing surface tables.

FLOOR PLAN CHART



WYNDHAM
Peachtree
Conference Center

2443 Highway 54 West, Peachtree City, Georgia 30269
 Phone: 770-486-3309 Fax: 770-487-5190

WYNDHAM.COM / 1-800-WYNDHAM / WYNDHAM.PCC.COM
 Group Sales: 888-WYNDHAM

©2013 Wyndham Hotels and Resorts, LLC. All rights reserved. All Wyndham® hotels are either franchised by the company or managed by Wyndham Hotel Management, Inc. or one of its affiliates.
 MC-1305