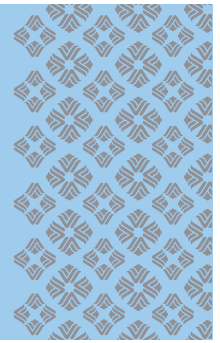




# WYNDHAM

## Hamilton Park Hotel and Conference Center



### LOCATION

We are Northern New Jersey's premier full-service luxury conference facility, purpose-built for meetings that garner greater results. From the stylish, comfortable surroundings to the on-demand assistance of our Conference Concierge to the thoughtful, relaxing touches in the spacious guest rooms, everything has been planned to make the most of your time with us.

Complete Meeting and Day Meeting Packages simplify the process with single solutions addressing all aspects of your meeting, from accommodations to meal selection to space needs and budgeting. From high-level executive meetings to product education seminars to national sales events, no matter your goal, Wyndham Hamilton Park Hotel and Conference Center will help you reach it.

### ROOM DETAILS

- 219 guest rooms
- 138 double accommodations
- 12 premium king bedded rooms
- Complimentary High Speed & Wireless Internet access
- HD Flat Panel TVs

### DINING AND ENTERTAINMENT

- Vanderbilt's Sports & Spirits, newly renovated, offers American Cuisine, 16 draft beers on tap, billiards, shuffleboard and 27 HD Flat Panel
- Arrive dining room offers the finest, award-winning cuisine
- Arrive Courts intimate private dining area for up to 60 people with natural lighting and patio access for outdoor receptions
- Room Service from 6:30 AM to 11:00 PM
- Ambassador Ballrooms for elaborate private dining for up to 300 people



### RECREATION

- 24-hour Fitness Center offers indoor/outdoor lap pool, whirlpool, saunas and a variety of Matrix fitness equipment including treadmills with flat screen televisions
- Two racquetball courts
- Walking and jogging lighted trails through Fairleigh Dickinson University
- One volleyball court
- Basketball court

### MEETING SPACE HIGHLIGHTS

- Ergonomically engineered meeting space with Herman Miller Aeron chairs, ceiling mounted LCD projectors and more
- Windows for natural lighting available in all main general session rooms
- Afton Suite is an exclusive meeting area with 2 main general session rooms and 13 breakout rooms
- Total meeting rooms 40
- IACC Certification
- Maximum Group Capacity 320
- Complimentary Wireless Internet Access and Computer Kiosk stations
- Full Service business center with computer services, printers, faxing, copying, collating and binding. Packaging, shipping and courier services are also available
- On-site Technology staff

### GETTING THERE

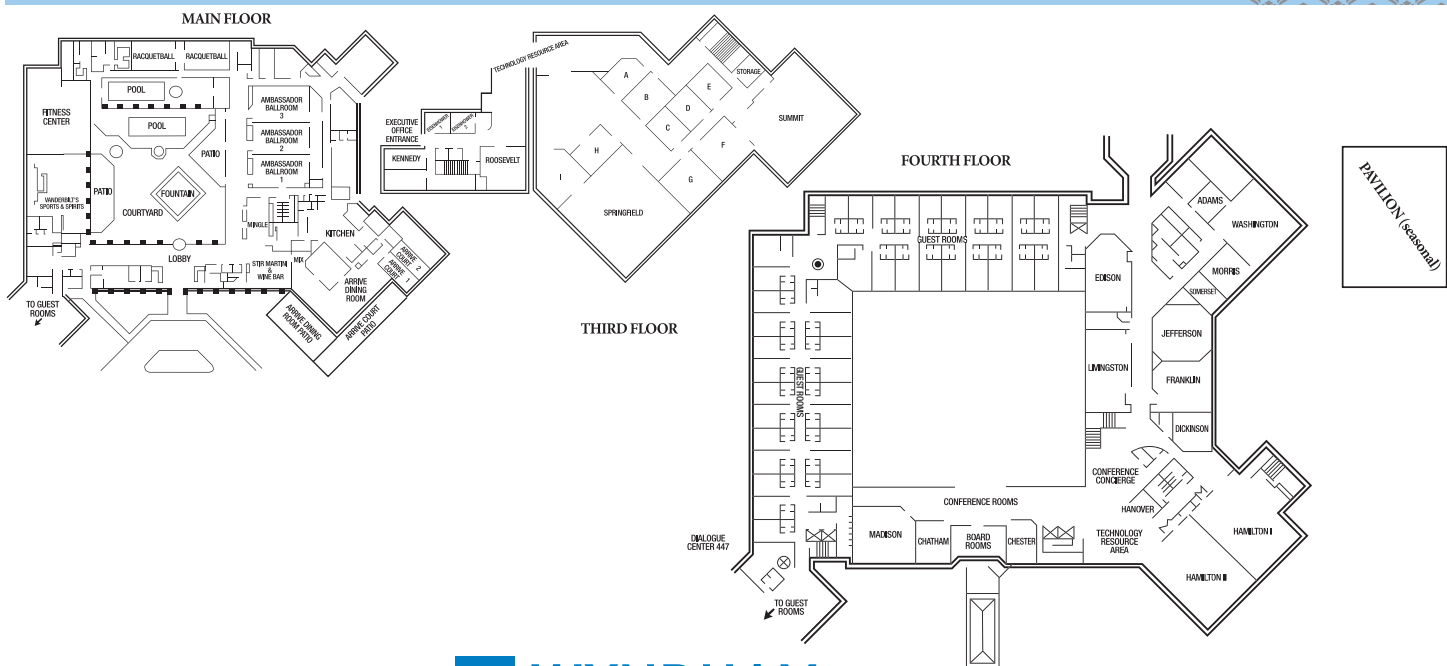
- Situated on 13 acres in Morris County
- 18 miles from Newark Liberty International Airport and 40 minutes from New York City
- Complimentary parking
- Direct train to and from New York City



# MEETING SPACE CAPACITY CHART

Name Of Room	Square Feet	Dimensions	Ceiling Height	Classroom	Theater	Banquet	Reception
Hamilton 1 & 2	4,392	72' x 61'	12'	200	320	180	220
Hamilton 1	2,318	38' x 61'	12'	80	140	80	100
Hamilton 2	2,013	33' x 61'	12'	60	140	80	100
Washington	1,369	37' x 37'	10'	60	80	70	75
Madison	1,216	38' x 32'	10'	50	60	60	65
Jefferson	1,156	34' x 34'	10'	32	50	N/A	50
Livingston	1,215	45' x 27'	10'	48	75	N/A	60
Edison	1,056	44' x 24'	10'	40	70	N/A	60
Franklin	986	29' x 34'	10'	32	60	N/A	50
Morris	700	25' x 28'	10'	24	30	N/A	N/A
Boardroom	627	33' x 19'	10'	-	-	-	-
Dickinson	484	22' x 22'	10'	16	30	N/A	N/A
Chatham	480	20' x 24'	10'	16	20	N/A	N/A
Somerset	448	16' x 28'	10'	16	20	N/A	N/A
Chester	432	24' x 18'	10'	16	20	N/A	N/A
Adams	289	17' x 17'	10'	10	14	N/A	N/A
Afton Springfield	1,444	38' x 38'	10'	60	80	N/A	N/A
Afton Summit	1,360	38' x 36'	10'	50	80	N/A	N/A
Afton A/B	252	14' x 18'	9'	12	18	N/A	N/A
Afton C	210	14' x 15'	10'	8	10	N/A	N/A
Afton D	180	12' x 15'	10'	8	10	N/A	N/A
Afton E	195	13' x 15'	10'	8	10	N/A	N/A
Afton F/G	380	20' x 19'	10'	18	24	N/A	N/A
Afton H	252	18' x 14'	10'	12	18	N/A	N/A
Ambassador Ballrooms 1, 2 & 3	4,680	90' x 52'	18'	250	360	300	300
Ambassador Ballroom 1, 2 OR 3	1,560	30' x 52'	18'	60	100	100	125

# FLOOR PLAN CHART



**WYNDHAM**  
 Hamilton Park  
 Hotel and Conference Center  
 175 Park Avenue, Florham Park, NJ 07932  
 1-800-321-6000 Phone: 973-377-2424 Fax: 973-377-6108  
[WYNDHAM.COM](http://WYNDHAM.COM) / 1-800-WYNDHAM  
 Group Sales: 888-WYNDHAM